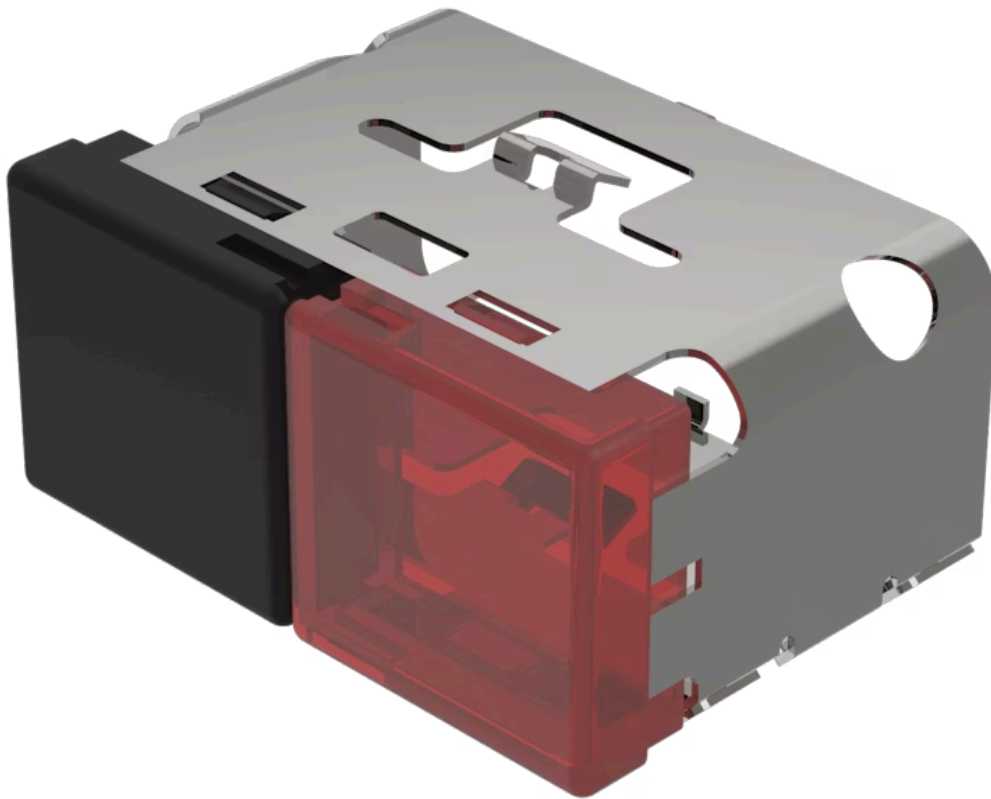


# Lens

03-  
902.0/2

Distribution by  
Farnell



<https://farnell.eao.com/component/03-902.0/2/...>

Your product:

---



## 03-902.0/2 Lens

### PRODUCT RANGE

**Product Status:** Not Recommended for new design

### FRONT

**Front form:** Rectangular

### OPERATING-/INDICATION PART

**Lens colour:** Black-red

**Lens material:** Plastic

**Lens illumination:** Illuminated

**Lens shape:** Flush

**Lens optics:** opaque-translucent

### MECHANICAL CHARACTERISTICS

**Weight:** 0.01 kg

### CERTIFICATE

**REACH:** REACH compliant

**RoHS:** RoHS compliant

### OTHER

**Short Description:** Lens, 18 mm x 38 mm, Illuminated, Black-red, Flush, Plastic

**Dimension:** 18 mm x 38 mm

**Product attributes:**

With light barrier, not suitable for film insert