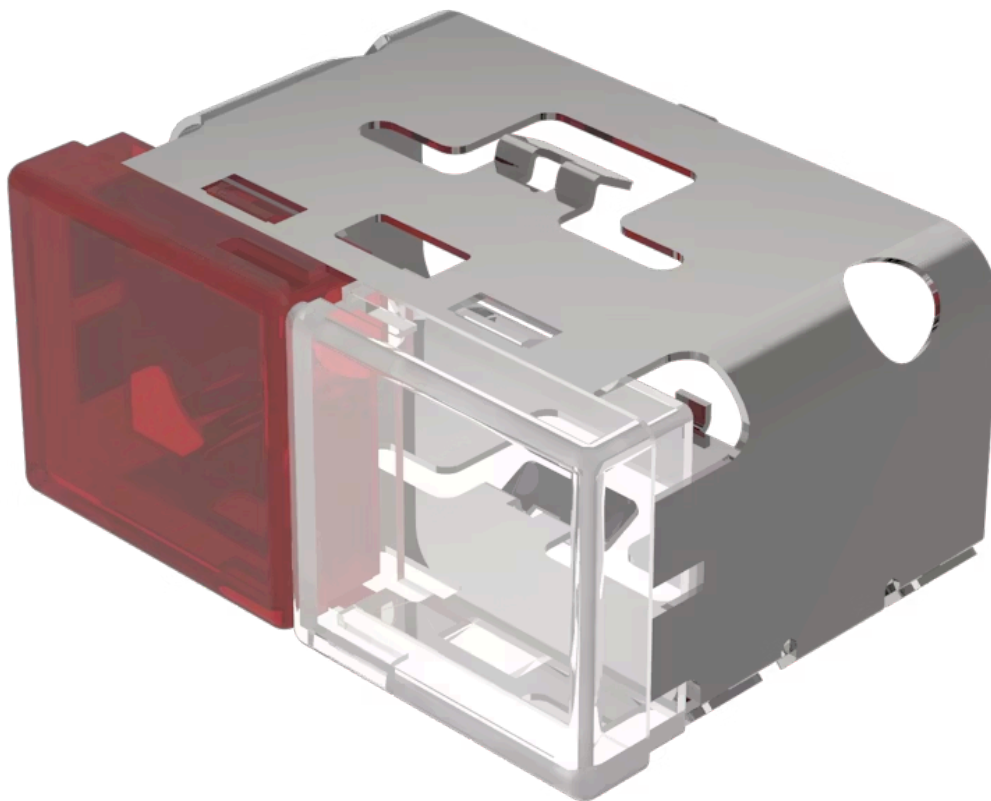


Lens

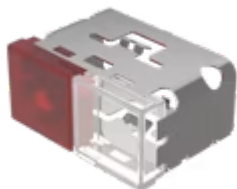
03-
902.2/9

Distribution by
Farnell



<https://farnell.eao.com/component/03-902.2/9/...>

Your product:



03-902.2/9 Lens

Loading ...

PRODUCT RANGE

Product Status: Not Recommended for new design

FRONT

Front form: Rectangular

OPERATING-/INDICATION PART

Lens colour: Red-white

Lens material: Plastic

Lens illumination: Illuminated

Lens shape: Flush

Lens optics: translucent

MECHANICAL CHARACTERISTICS

Weight: 0.01 kg

CERTIFICATE

REACH: REACH compliant

RoHS: RoHS compliant

OTHER

Short Description: Lens, 18 mm x 38 mm, Illuminated, Red-white, Flush, Plastic

Dimension: 18 mm x 38 mm

Product attributes:

With light barrier, not suitable for film insert