

Single-LED

10-4H21.1039P

Distribution by
Farnell



<https://farnell.eao.com/component/10-4H21.103...>

Your product:



10-4H21.1039P Single-LED

Loading ...

OPERATING-/INDICATION PART

Illumination colour: White

ELECTRICAL CHARACTERISTICS

Forward voltage:

Operating voltage: 72 V AC/DC

Operation current: 2,2 mA -30%/+25%

Lumi. Intensity: 4 x 382 mcd

MECHANICAL CHARACTERISTICS

Weight: 0.002 kg

CERTIFICATE

REACH: REACH compliant

RoHS: RoHS compliant

OTHER

Short Description: Single-LED, BA9s, White, 72 V AC/DC

Kind of illumination: Multi-LED EN 50155

Hints:

A suitable LED remover Part No. 700.006.0

The luminous intensity stated is for when used with DC

Electrical and optical data are measured at 25 °C

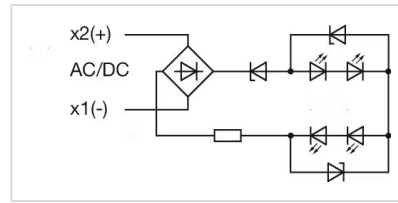
The specified 72 and 110 VAC/VDC versions are built with a bridge rectifier

The specified 72 and 110 VAC/VDC versions are built with a protection diode

In case one LED fails, the other pair of still functioning LED's is working. The light output then is half in order to indicate the malfunction and shows this way the need for replacement

Luminosity and wave length variations caused by LED manufacturing processes may cause slight differences regarding the illumination. The customer has to decide what resistor shall be used to the LED

Wiring diagrams:



Dimension drawings:

