

# Single-LED

10-4H22.1034P

Distribution by  
Farnell



<https://farnell.eao.com/component/10-4H22.103...>

Your product:

---



## 10-4H22.1034P Single-LED

*Loading ...*

### OPERATING-/INDICATION PART

**Illumination colour:** Yellow

### ELECTRICAL CHARACTERISTICS

**Forward voltage:**

**Operating voltage:** 110 V AC/DC

**Operation current:** 2 mA -30%/+25%

**Lumi. Intensity:** 4 x 128 mcd

### MECHANICAL CHARACTERISTICS

**Weight:** 0.002 kg

### CERTIFICATE

**REACH:** REACH compliant

**RoHS:** RoHS compliant

### OTHER

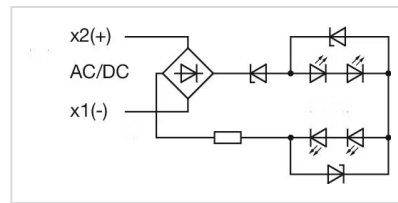
**Short Description:** Single-LED, BA9s, Yellow, 110 V AC/DC

**Kind of illumination:** Multi-LED EN 50155

**Hints:** A suitable LED remover Part No. 700.006.0  
The luminous intensity stated is for when used with DC  
Electrical and optical data are measured at 25 °C  
The specified 72 and 110 VAC/VDC versions are built with a bridge rectifier  
The specified 72 and 110 VAC/VDC versions are built with a protection diode  
In case one LED fails, the other pair of still functioning LED's is working. The light output then is half in order to indicate the malfunction and shows this way the need for replacement

Luminosity and wave length variations caused by LED manufacturing processes may cause slight differences regarding the illumination. The customer has to decide what resistor shall be used to the LED

**Wiring diagrams:**



**Dimension drawings:**

