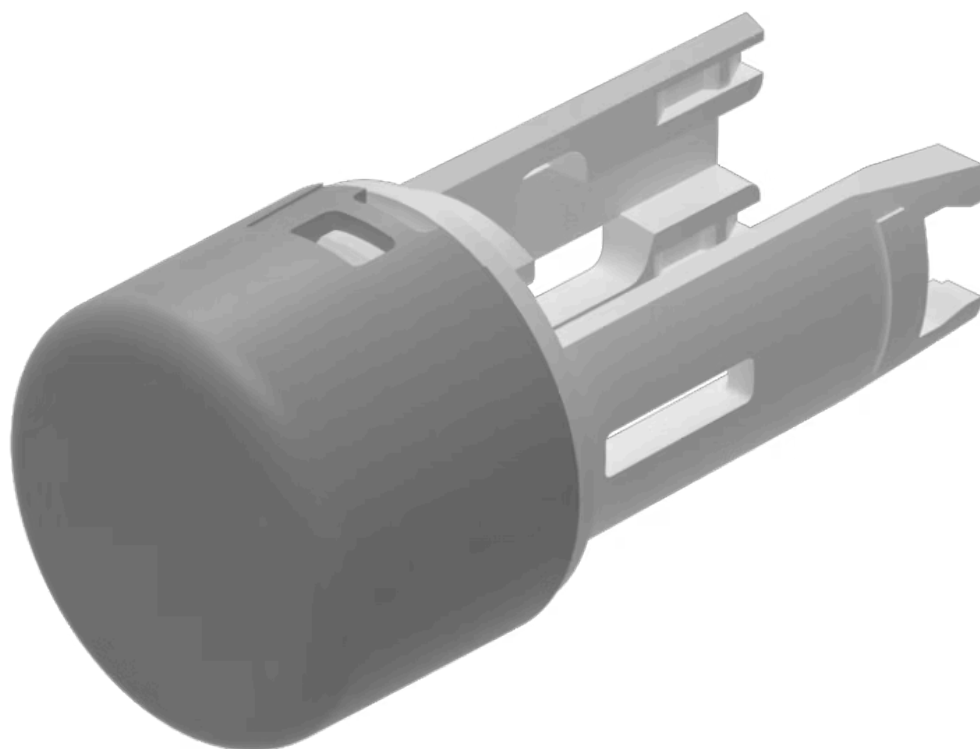


Lens

18-
932.8

Distribution by
Farnell



<https://farnell.eao.com/p/18-932.8>

Your product:



18-932.8 Lens

PRODUCT RANGE

Product Status: Phase-out

FRONT

Front form: Round

OPERATING-/INDICATION PART

Lens colour: Grey

Lens material: Plastic

Lens illumination: Non illuminated

Lens shape: Flush

Lens optics: opaque

MECHANICAL CHARACTERISTIC

Weight: 0.001 kg

CERTIFICATE

REACH: REACH compliant

RoHS: RoHS compliant

OTHER

Short Description:

Lens, Ø 7.5 mm, Non illuminated, Grey, Flush, Plastic

Dimension:

Ø 7.5 mm