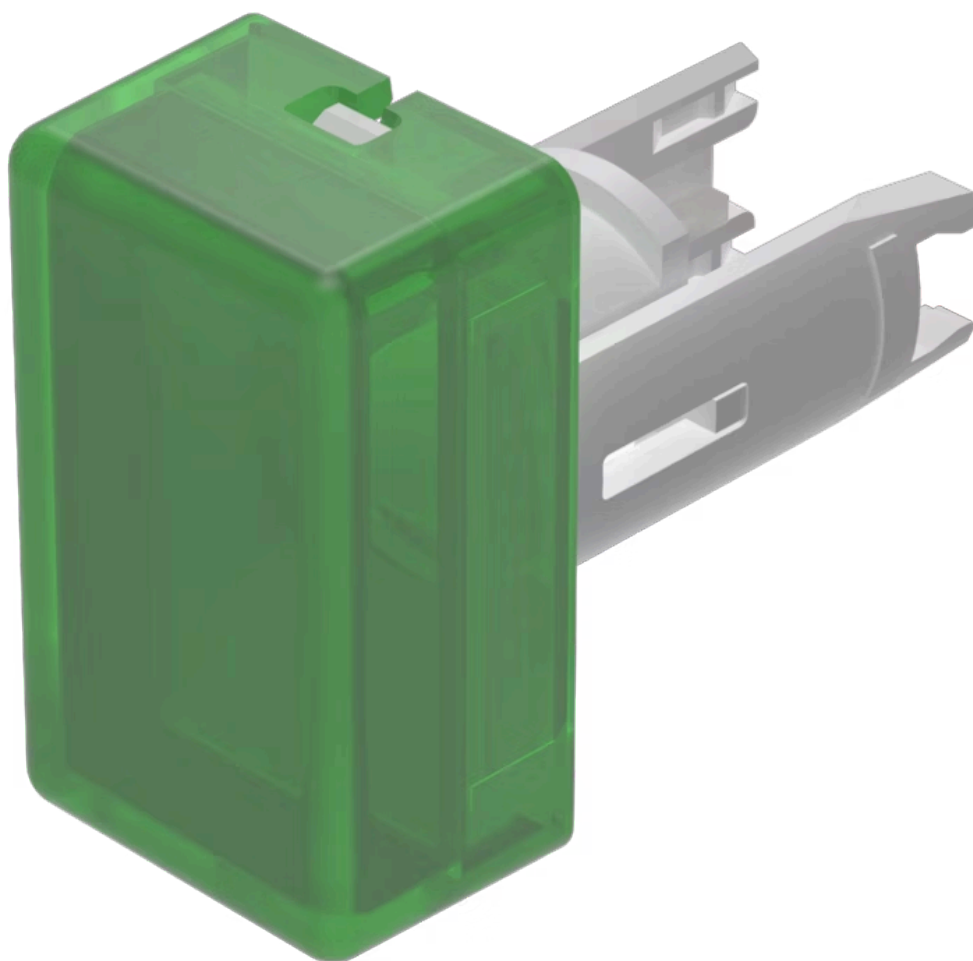


# Lens

18-  
941.5L

Distribution by  
Farnell



<https://farnell.eao.com/p/18-941.5L>

Your product:

---



## 18-941.5L Lens

### PRODUCT RANGE

**Product Status:** Phase-out

### FRONT

**Front form:** Rectangular

### OPERATING-/INDICATION PART

**Lens colour:** Green

**Lens material:** Plastic

**Lens illumination:** Illuminated

**Lens shape:** Flush

**Lens optics:** translucent

### MECHANICAL CHARACTERISTICS

**Weight:** 0.001 kg

### CERTIFICATE

**REACH:** REACH compliant

**RoHS:** RoHS compliant

### OTHER

**Short Description:** Lens, 12.5 mm x 7.5 mm, Illuminated, Green, Flush, Plastic

**Dimension:** 12.5 mm x 7.5 mm

**Hints:**

Luminosity and wave length variations caused by LED manufacturing processes may cause slight differences regarding the illumination. The customer has to decide what resistor shall be used to the LED  
Red LED  $V_f = 2.0$  VDC, yellow lens with white LED  $V_f = 3.0$  V, green LED  $V_f = 3.2$  V

**Wiring diagrams:**