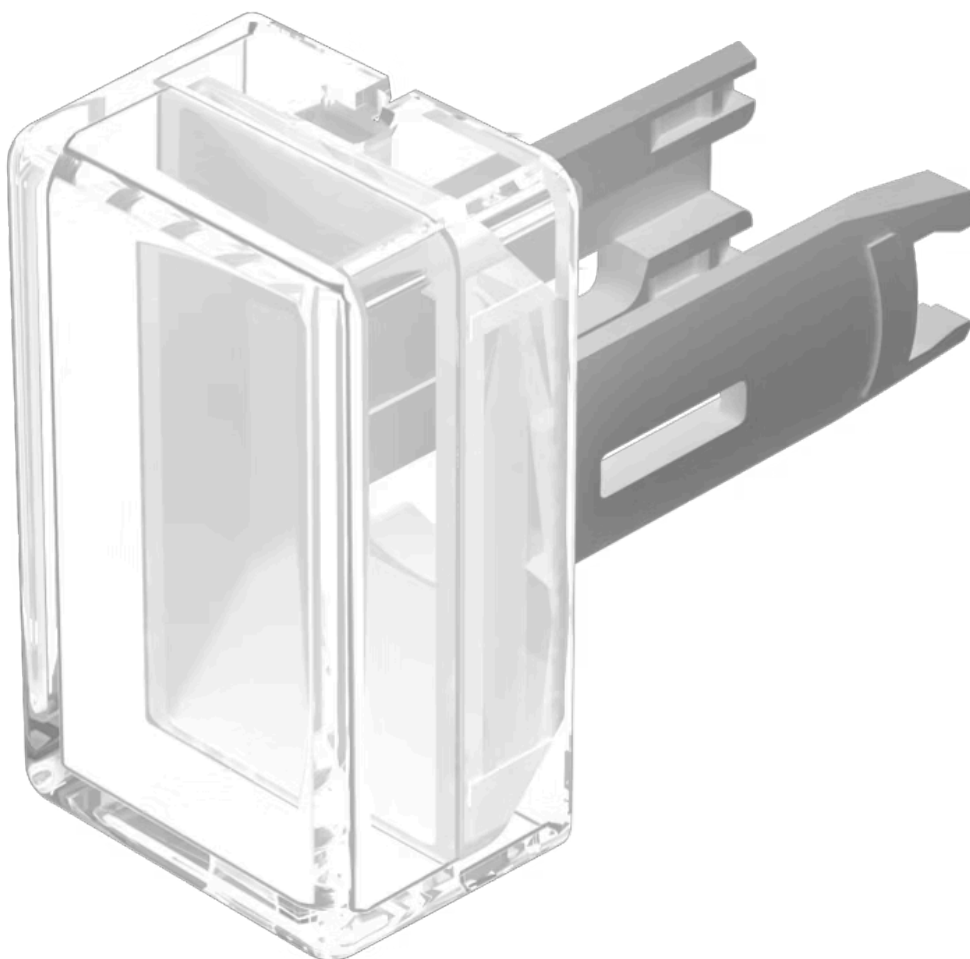


# Lens

18-  
942.9

Distribution by  
Farnell



<https://farnell.eao.com/p/18-942.9>

Your product:

---



## 18-942.9 Lens

### PRODUCT RANGE

**Product Status:** Phase-out

### FRONT

**Front form:** Rectangular

### OPERATING-/INDICATION PART

**Lens colour:** White

**Lens material:** Plastic

**Lens illumination:** Illuminated

**Lens shape:** Flush

**Lens optics:** translucent

### MECHANICAL CHARACTERISTICS

**Weight:** 0.001 kg

### CERTIFICATE

**REACH:** REACH compliant

**RoHS:** RoHS compliant

### OTHER

**Short Description:**

Lens, 12.5 mm x 7.5 mm, Illuminated, White, Flush, Plastic

**Dimension:**

12.5 mm x 7.5 mm