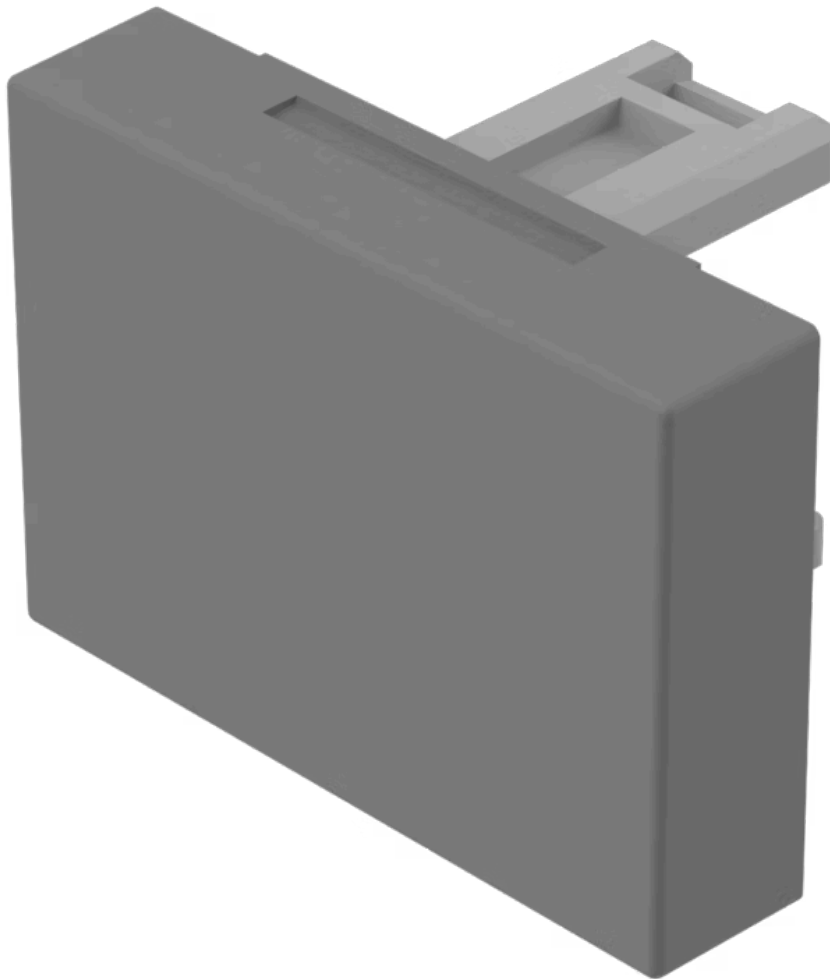


Lens

31-
901.8

Distribution by
Farnell



<https://farnell.eao.com/component/31-901.8/en...>

Your product:



31-901.8 Lens

PRODUCT RANGE

Product Status: Not Recommended for new design

FRONT

Front form: Rectangular

OPERATING-/INDICATION PART

Lens colour: Grey

Lens material: Plastic

Lens illumination: Non illuminated

Lens shape: Flush

Lens optics: opaque

MECHANICAL CHARACTERISTICS

Weight: 0.001 kg

CERTIFICATE

REACH: REACH compliant

RoHS: RoHS compliant

OTHER

Short Description:

Lens, 21.5 mm x 15.3 mm, Non illuminated, Grey, Flush, Plastic

Dimension:

21.5 mm x 15.3 mm