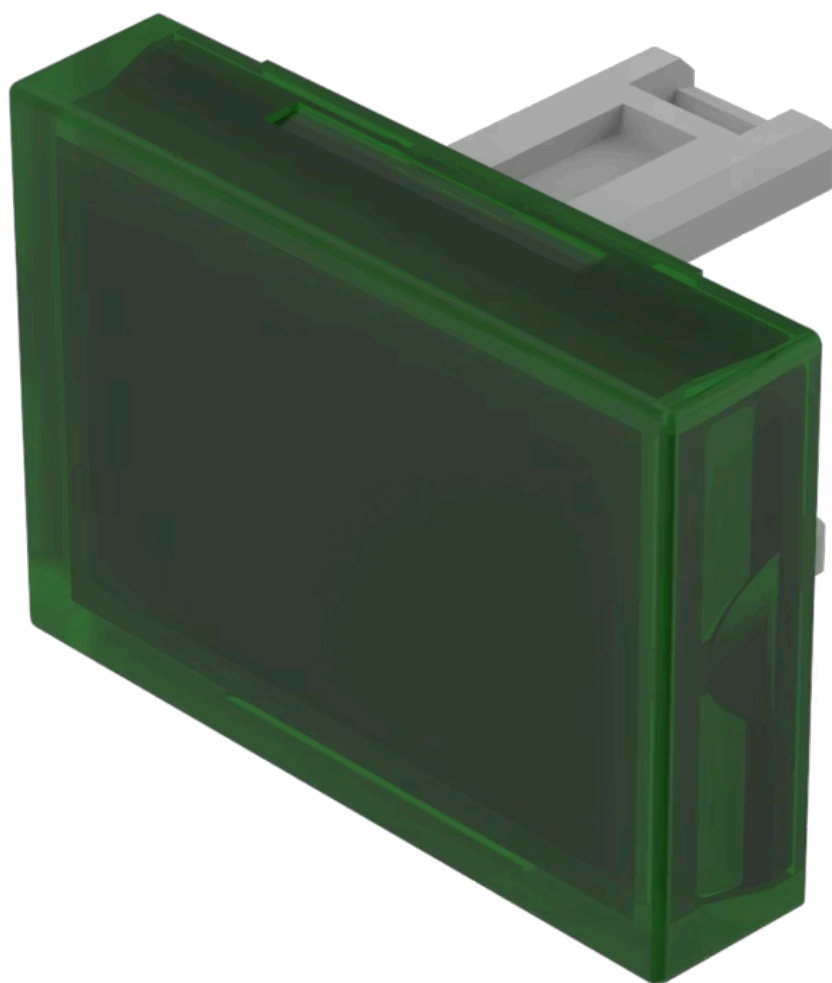


Lens

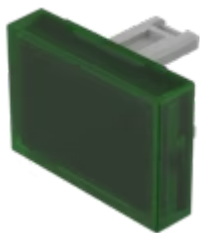
31-
903.5

Distribution by
Farnell



<https://farnell.eao.com/component/31-903.5/en...>

Your product:



31-903.5 Lens

PRODUCT RANGE

Product Status: Not Recommended for new design

FRONT

Front form: Rectangular

OPERATING-/INDICATION PART

Lens colour: Green

Lens material: Plastic

Lens illumination: Illuminated

Lens shape: Flush

Lens optics: transparent

MECHANICAL CHARACTERISTICS

Weight: 0.001 kg

CERTIFICATE

REACH: REACH compliant

RoHS: RoHS compliant

OTHER

Short Description:

Lens, 21.5 mm x 15.3 mm, Illuminated, Green, Flush, Plastic

Dimension:

21.5 mm x 15.3 mm