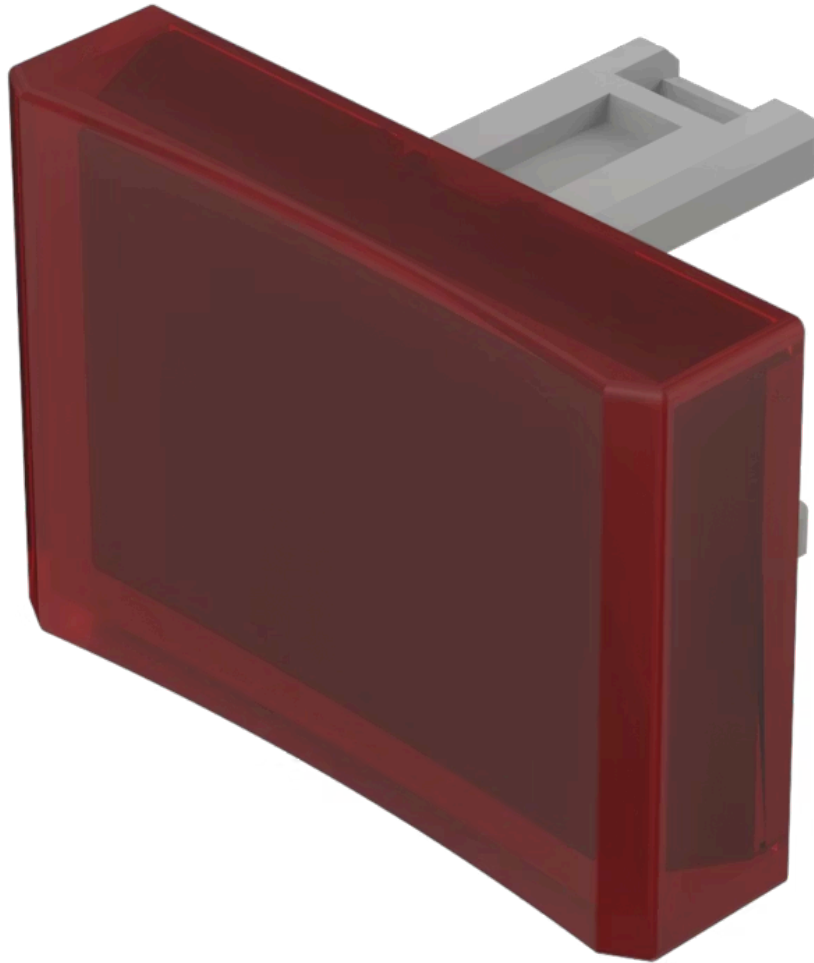


Lens

31-
904.2

Distribution by
Farnell



Your product:



31-904.2 Lens

Loading ...

PRODUCT RANGE

Product Status: Not Recommended for new design

FRONT

Front form: Rectangular

OPERATING-/INDICATION PART

Lens colour: Red

Lens material: Plastic

Lens illumination: Illuminated

Lens shape: Concave

Lens optics: transparent

MECHANICAL CHARACTERISTICS

Weight: 0.001 kg

CERTIFICATE

REACH: REACH compliant

RoHS: RoHS compliant

OTHER

Short Description:

Lens, 21.5 mm x 15.3 mm, Illuminated, Red, Concave, Plastic

Dimension:

21.5 mm x 15.3 mm