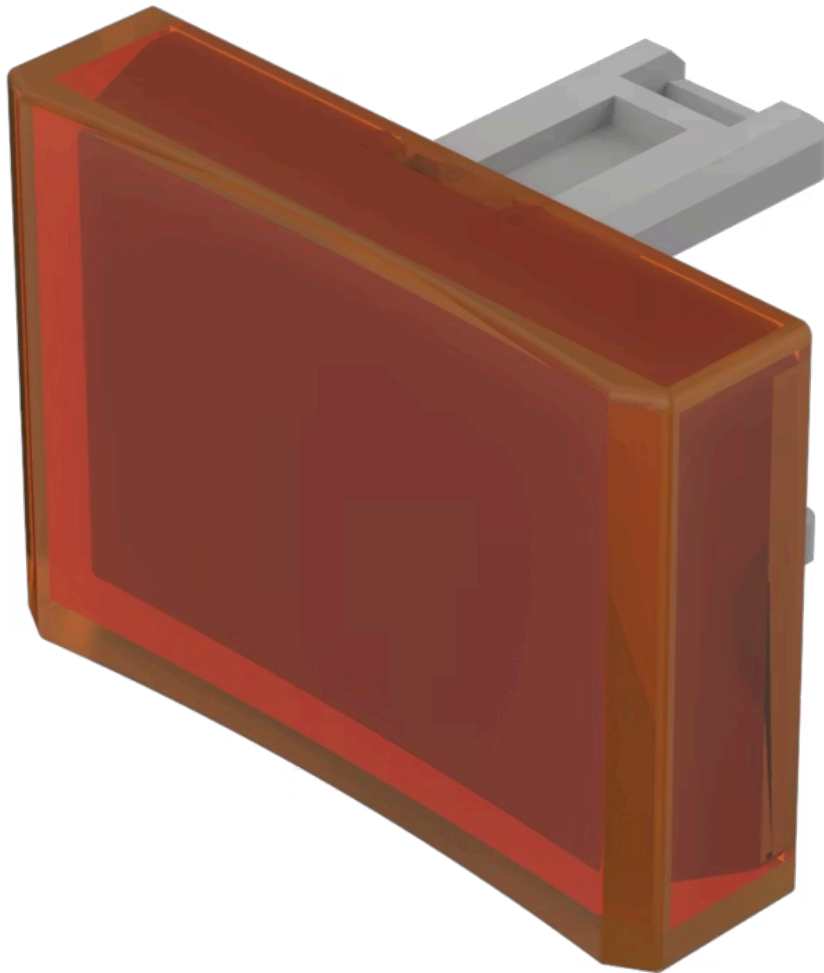


# Lens

31-  
904.3

Distribution by  
Farnell



Your product:

---



## 31-904.3 Lens

### PRODUCT RANGE

**Product Status:** Not Recommended for new design

### FRONT

**Front form:** Rectangular

### OPERATING-/INDICATION PART

**Lens colour:** Orange

**Lens material:** Plastic

**Lens illumination:** Illuminated

**Lens shape:** Concave

**Lens optics:** transparent

### MECHANICAL CHARACTERISTICS

**Weight:** 0.001 kg

### CERTIFICATE

**REACH:** REACH compliant

**RoHS:** RoHS compliant

### OTHER

**Short Description:**

Lens, 21.5 mm x 15.3 mm, Illuminated, Orange, Concave, Plastic

**Dimension:**

21.5 mm x 15.3 mm