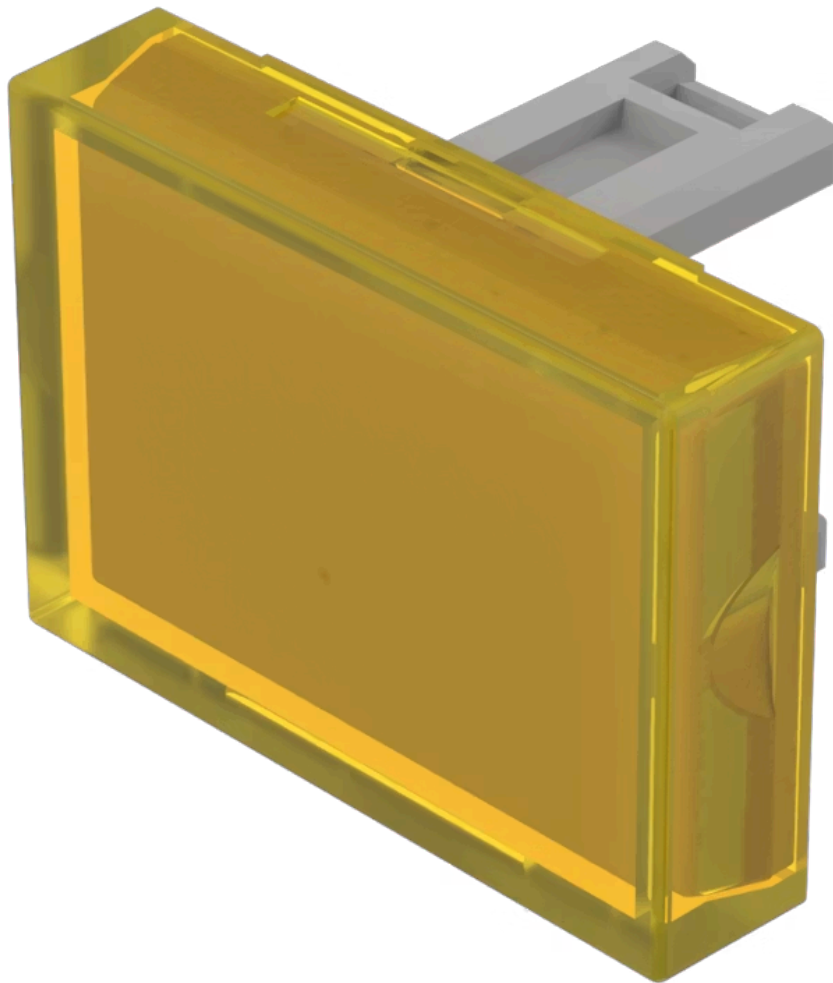


# Lens

31-  
905.4

Distribution by  
Farnell



<https://farnell.eao.com/component/31-905.4/en...>

Your product:

---



## 31-905.4 Lens

*Loading ...*

### PRODUCT RANGE

**Product Status:** Not Recommended for new design

### FRONT

**Front form:** Rectangular

### OPERATING-/INDICATION PART

**Lens colour:** Yellow

**Lens material:** Plastic

**Lens illumination:** Illuminated

**Lens shape:** Flush

**Lens optics:** transparent

### MECHANICAL CHARACTERISTICS

**Weight:** 0.001 kg

### CERTIFICATE

**REACH:** REACH compliant

**RoHS:** RoHS compliant

### OTHER

**Short Description:** Lens, 21.5 mm x 15.3 mm, Illuminated, Yellow, Flush, Plastic

**Dimension:** 21.5 mm x 15.3 mm

**Product attributes:**

Not recommended for film insert