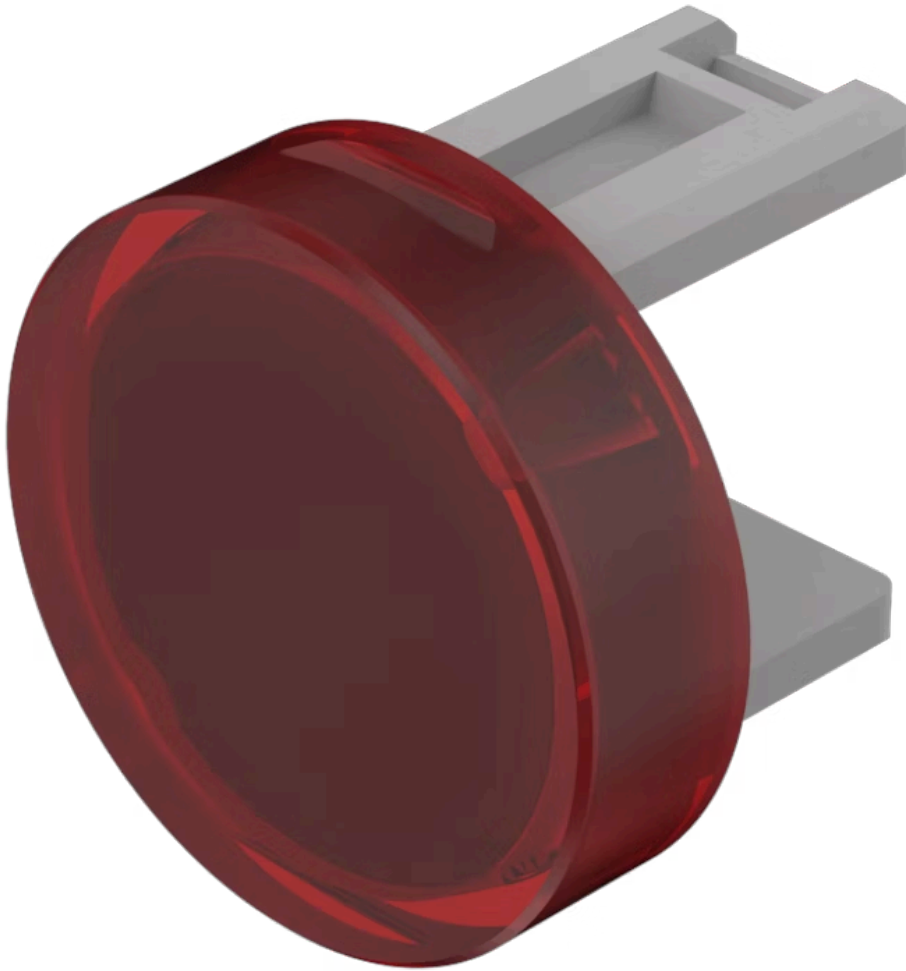


Lens

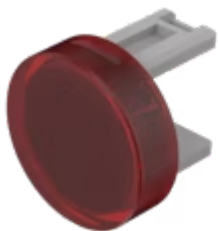
31-
931.2

Distribution by
Farnell



<https://farnell.eao.com/p/31-931.2>

Your product:



31-931.2 Lens

FRONT

Front form: Round

OPERATING-/INDICATION PART

Lens colour: Red

Lens material: Plastic

Lens illumination: Illuminated

Lens shape: Flush

Lens optics: translucent

MECHANICAL CHARACTERISTIC

Weight: 0.001 kg

CERTIFICATE

REACH: REACH compliant

RoHS: RoHS compliant

OTHER

Short Description: Lens, Ø 15.8 mm, Illuminated, Red, Flush, Plastic

Dimension: Ø 15.8 mm

Product attributes: Not recommended for film insert