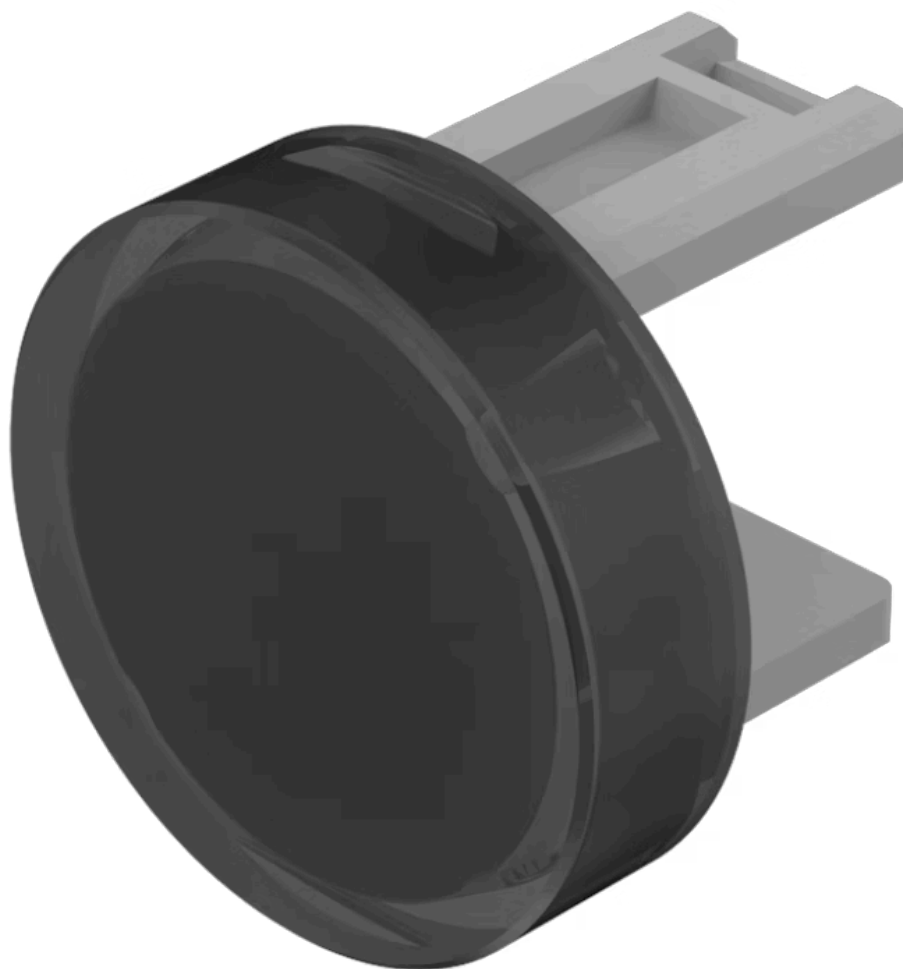


Lens

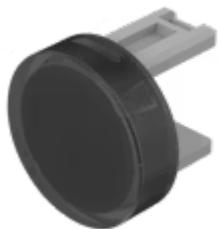
31-
933.1

Distribution by
Farnell



<https://farnell.eao.com/p/31-933.1>

Your product:



31-933.1 Lens

PRODUCT RANGE

Product Status: Not Recommended for new design

FRONT

Front form: Round

OPERATING-/INDICATION PART

Lens colour: Smokey black

Lens material: Plastic

Lens illumination: Illuminated

Lens shape: Flush

Lens optics: transparent

MECHANICAL CHARACTERISTICS

Weight: 0.001 kg

CERTIFICATE

REACH: REACH compliant

RoHS: RoHS compliant

OTHER

Short Description:

Lens, Ø 15.8 mm, Illuminated, Smokey black, Flush, Plastic

Dimension:

Ø 15.8 mm