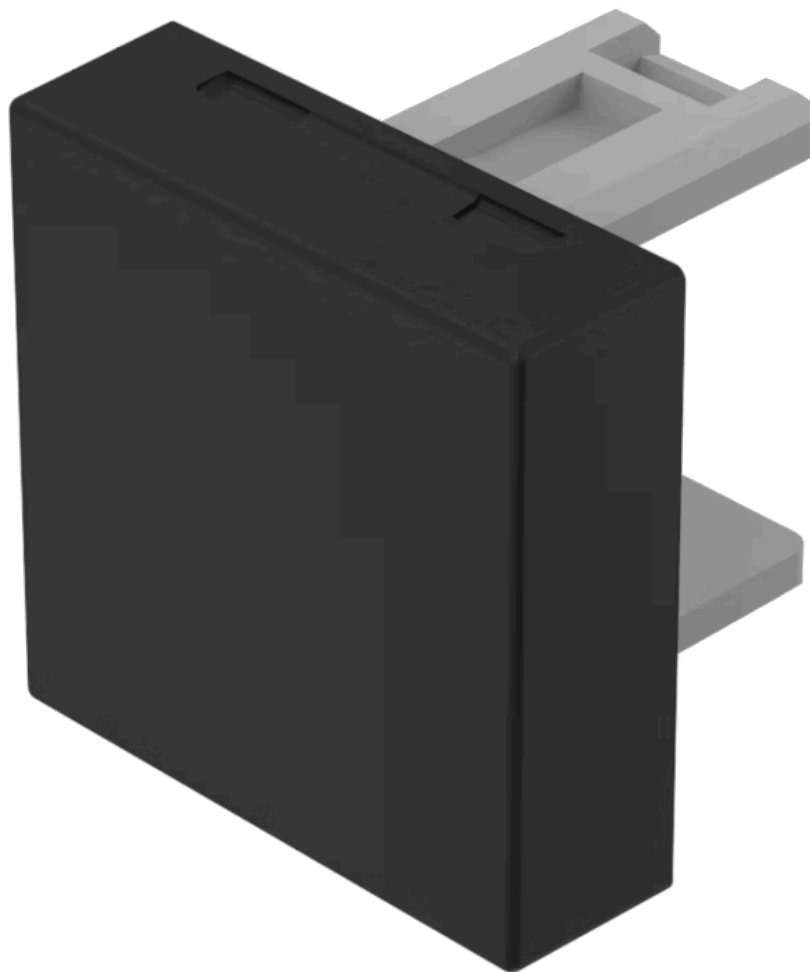


Lens

31-
951.0

Distribution by
Farnell



<https://farnell.eao.com/p/31-951.0>

Your product:



31-951.0 Lens

PRODUCT RANGE

Product Status: Not Recommended for new design

FRONT

Front form: Square

OPERATING-/INDICATION PART

Lens colour: Black

Lens material: Plastic

Lens illumination: Non illuminated

Lens shape: Flush

Lens optics: opaque

MECHANICAL CHARACTERISTICS

Weight: 0.001 kg

CERTIFICATE

REACH: REACH compliant

RoHS: RoHS compliant

OTHER

Short Description:

Lens, 15.3 mm x 15.3 mm, Non illuminated, Black, Flush, Plastic

Dimension:

15.3 mm x 15.3 mm