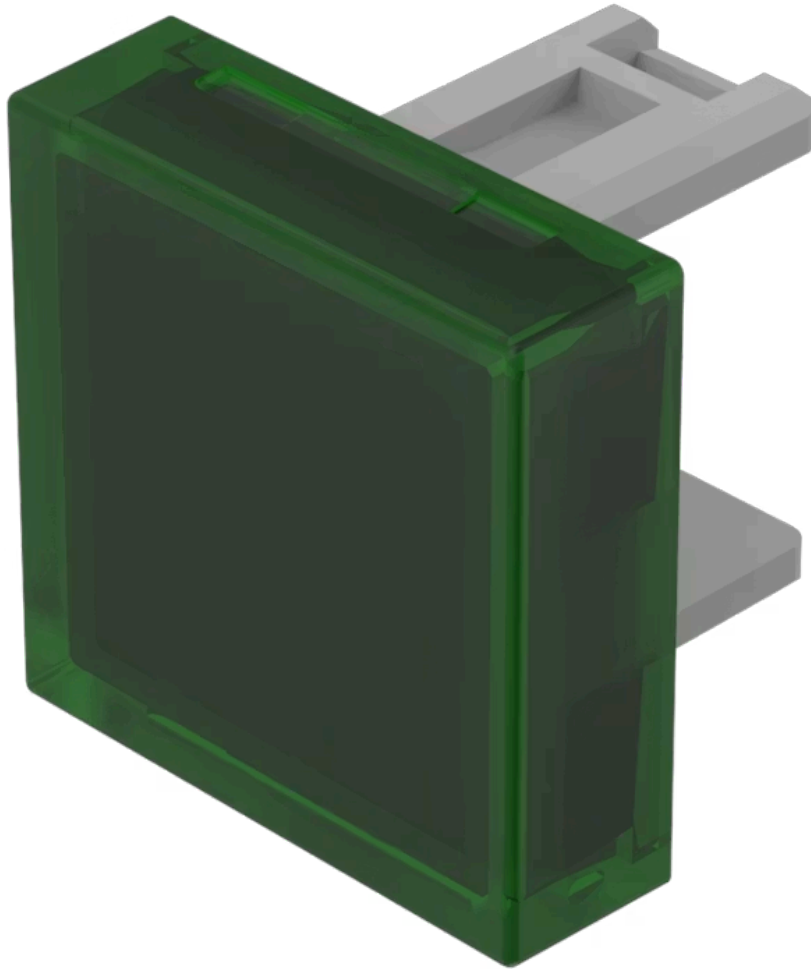


# Lens

31-  
953.5

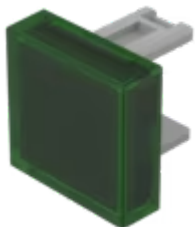
Distribution by  
Farnell



<https://farnell.eao.com/component/31-953.5/en...>

Your product:

---



## 31-953.5 Lens

*Loading ...*

### PRODUCT RANGE

**Product Status:** Not Recommended for new design

### FRONT

**Front form:** Square

### OPERATING-/INDICATION PART

**Lens colour:** Green

**Lens material:** Plastic

**Lens illumination:** Illuminated

**Lens shape:** Flush

**Lens optics:** transparent

### MECHANICAL CHARACTERISTICS

**Weight:** 0.001 kg

### CERTIFICATE

**REACH:** REACH compliant

**RoHS:** RoHS compliant

### OTHER

**Short Description:**

Lens, 15.3 mm x 15.3 mm, Illuminated, Green, Flush, Plastic

**Dimension:**

15.3 mm x 15.3 mm