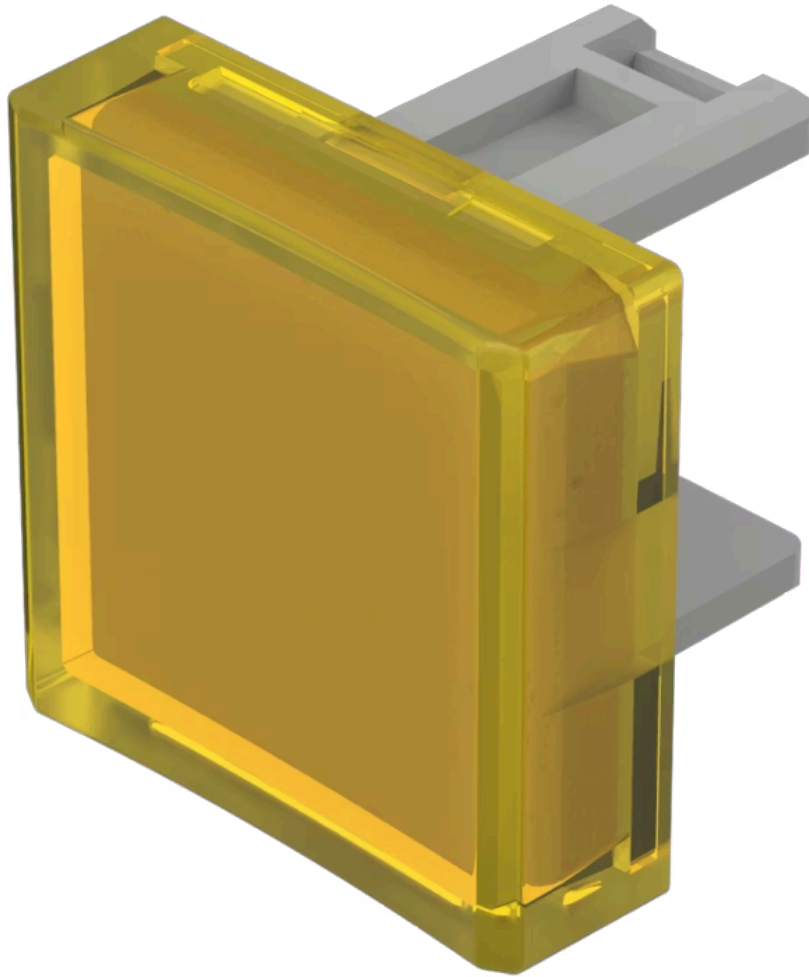


Lens

31-
954.4

Distribution by
Farnell



<https://farnell.eao.com/component/31-954.4/en...>

Your product:



31-954.4 Lens

PRODUCT RANGE

Product Status: Not Recommended for new design

FRONT

Front form: Square

OPERATING-/INDICATION PART

Lens colour: Yellow

Lens material: Plastic

Lens illumination: Illuminated

Lens shape: Concave

Lens optics: transparent

MECHANICAL CHARACTERISTICS

Weight: 0.001 kg

CERTIFICATE

REACH: REACH compliant

RoHS: RoHS compliant

OTHER

Short Description:

Lens, 15.3 mm x 15.3 mm, Illuminated, Yellow, Concave, Plastic

Dimension:

15.3 mm x 15.3 mm