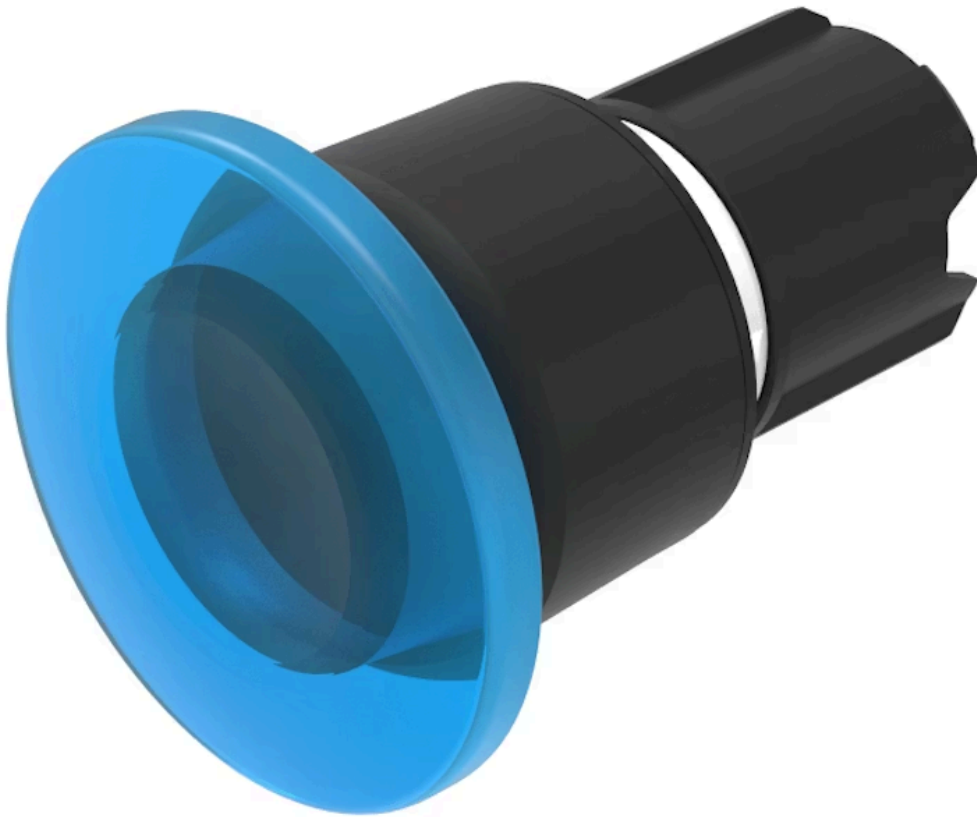


# Actuator

45-  
2630.19J0.000

Distribution by  
Farnell



<https://farnell.eao.com/component/45-2630.19J...>

Your product:

---



## 45-2630.19J0.000

### Actuator

#### FRONT

Front dimension:	Ø 40 mm
Front form:	Round
Front bezel colour:	Black
Front bezel material:	Plastic

#### MOUNTING

Design:	Raised
Mounting cut-out:	Ø 22.3 mm
Mounting type:	Panel mounting

#### OPERATING-/INDICATION PART

Lens colour:	Blue
Lens material:	Plastic
Lens illumination:	Illuminated
Lens shape:	Mushroom-head
Lens optics:	transparent

#### MECHANICAL CHARACTERISTICS

Switching action:	Maintained
Switching system:	Slow-make switching element
Release type:	Pull unlock
Mechanical lifetime:	500 000 cycles of operation

**Operating frequency:** Max. 1 800/h

**Weight:** 0.03 kg

## AMBIENT CONDITION

**IP front protection:** IP66, IP67, IP69K

**Operating temperature:** – 25 °C ... + 70 °C

**Storage temperature:** – 40 °C ... + 80 °C

**Shock resistance:** According to IEC 60068-2-27: Sinusoidal half-wave 50 g / 11 ms

**Vibration resistance:** According to IEC 60068-2-6: 20 ... 500 Hz: 5 g

**Climate resistance:** During operation according to IEC 60721: 3K6, 3C3, 3S2, 3M6

## CERTIFICATE

**REACH:** REACH compliant

**RoHS:** RoHS compliant

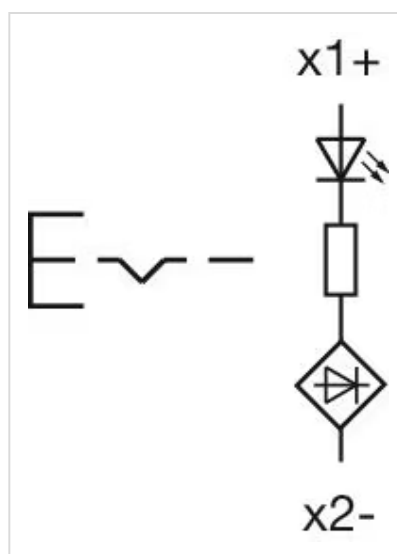
## OTHER

**Short Description:** Actuator, Ø 22.3 mm, Ø 40 mm, Mushroom-head, Illuminated, Blue, Plastic, transparent, Round, Black, Plastic, Maintained, IP66, IP67, IP69K, Pull unlock

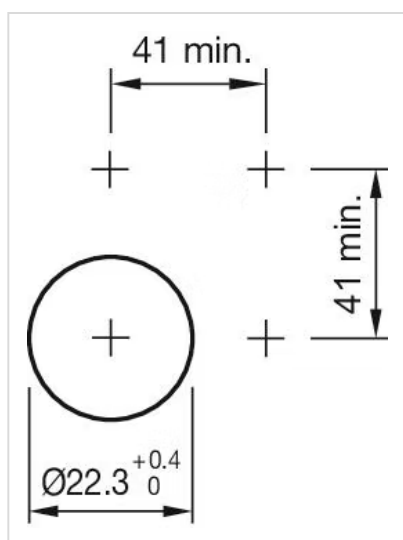
**Housing colour:** Black

**Housing material:** Plastic

**Wiring diagrams:**



**Mounting cut-outs:**



**Dimension drawings:**

