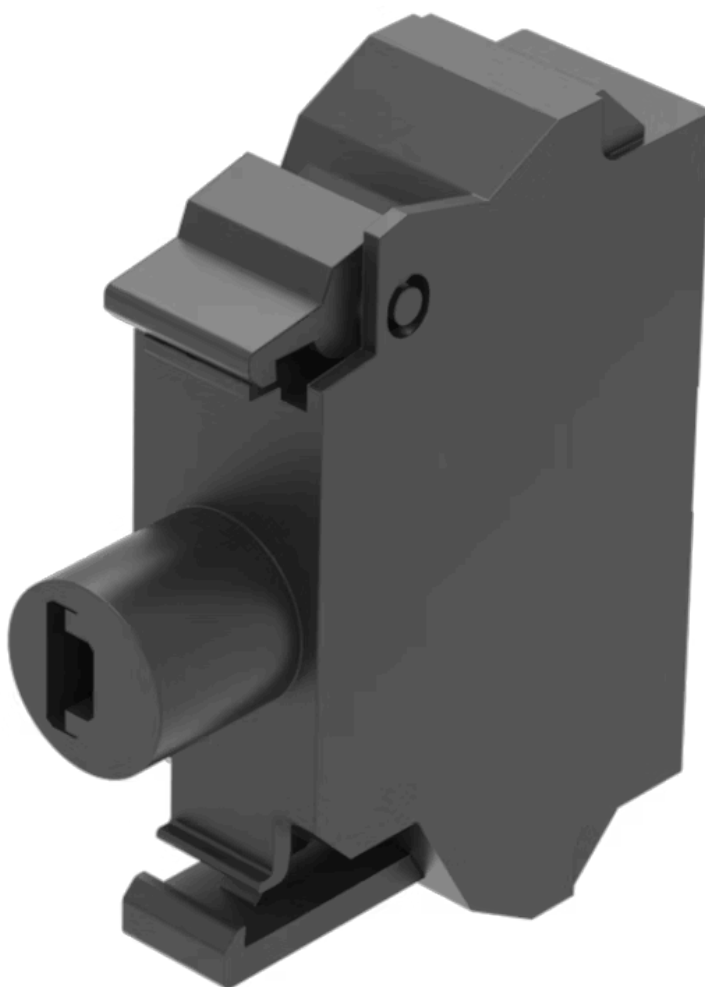


Illumination element

45-320.1H48

Distribution by
Farnell



<https://farnell.eao.com/p/45-320.1H48>

Your product:



45-320.1H48

Illumination element

PRODUCT RANGE

Product Status: Phase-out

MOUNTING

Component mounting type: Front mounting

OPERATING-/INDICATION PART

Illumination colour: Green

ELECTRICAL CHARACTERISTICS

Operating voltage: 230 V AC

Surge voltage resistance: 4 kV

Lumi. Intensity: 900 - 1400 mcd

MECHANICAL CHARACTERISTICS

Terminal: Spring-type terminal

Terminal details 1:
Solid 2 x (0.25 ... 1.5mm²)
Finely stranded
– Without end sleeves 2 x (0.5 ... 1.5 mm²)
– With end sleeves 2 x (0.5 ... 0.75 mm²)
– For AWG cables for auxiliary contacts 2 x (24 ... 16)

Weight: 0.01 kg

CERTIFICATE

REACH: REACH compliant

RoHS:

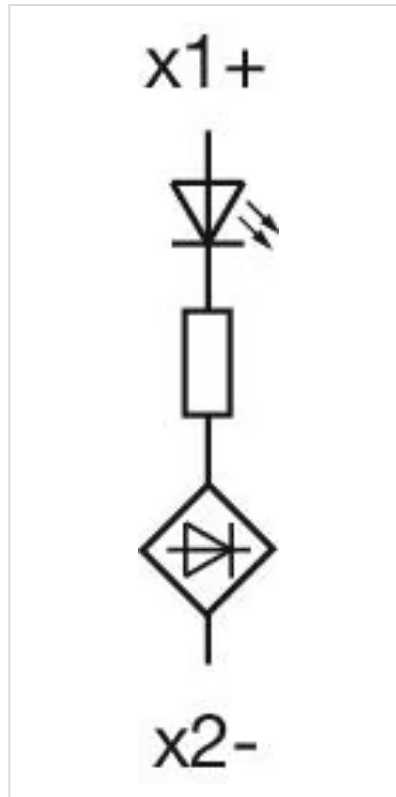
RoHS compliant

OTHER

Short Description:

Illumination element, Spring-type terminal, Green, 230 V AC, Front mounting

Wiring diagrams:



Dimension drawings:

