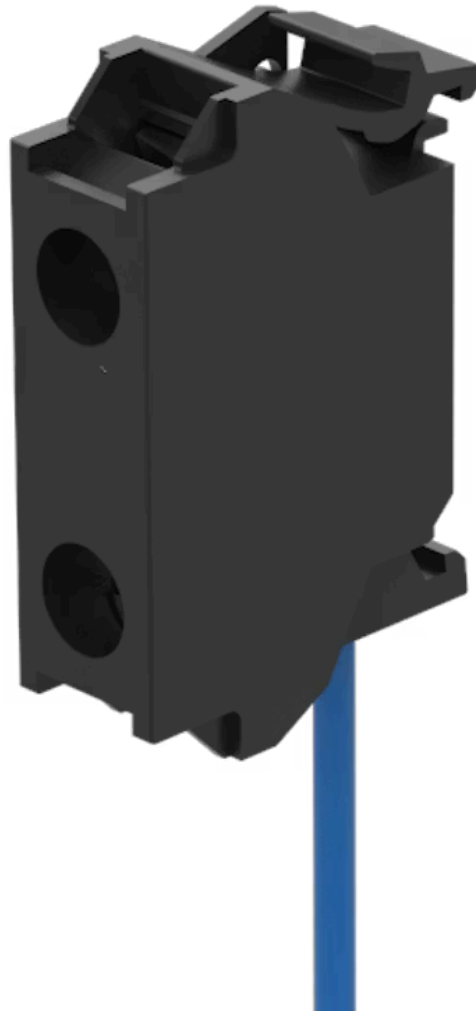


Test module

45-330.1115

Distribution by
Farnell



<https://farnell.eao.com/component/45-330.1115...>

Your product:



45-330.1115 Test module

Loading ...

ELECTRICAL CHARACTERISTICS

Forward voltage:

Operating voltage: 12 - 240 V AC/DC

MECHANICAL CHARACTERISTICS

Terminal: Screw terminal

Weight: 0.011 kg

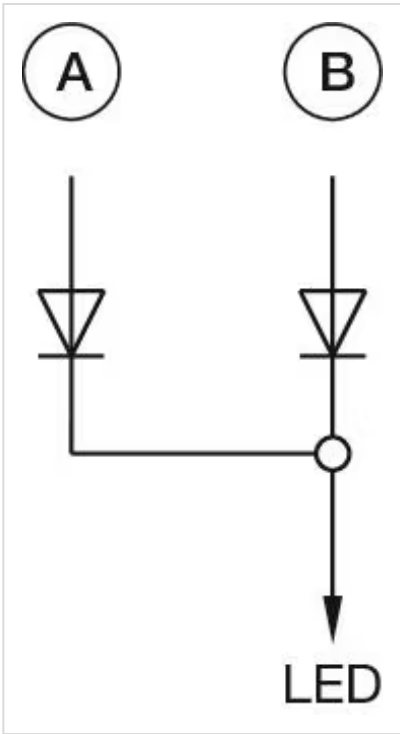
OTHER

Short Description: Test module, Screw terminal, 12 - 240 V AC/DC

Titel Accessory: Test module

Product attributes: Front plate mounting

Wiring diagrams:



A = Sign IN
B = Test IN

Dimension drawings:

