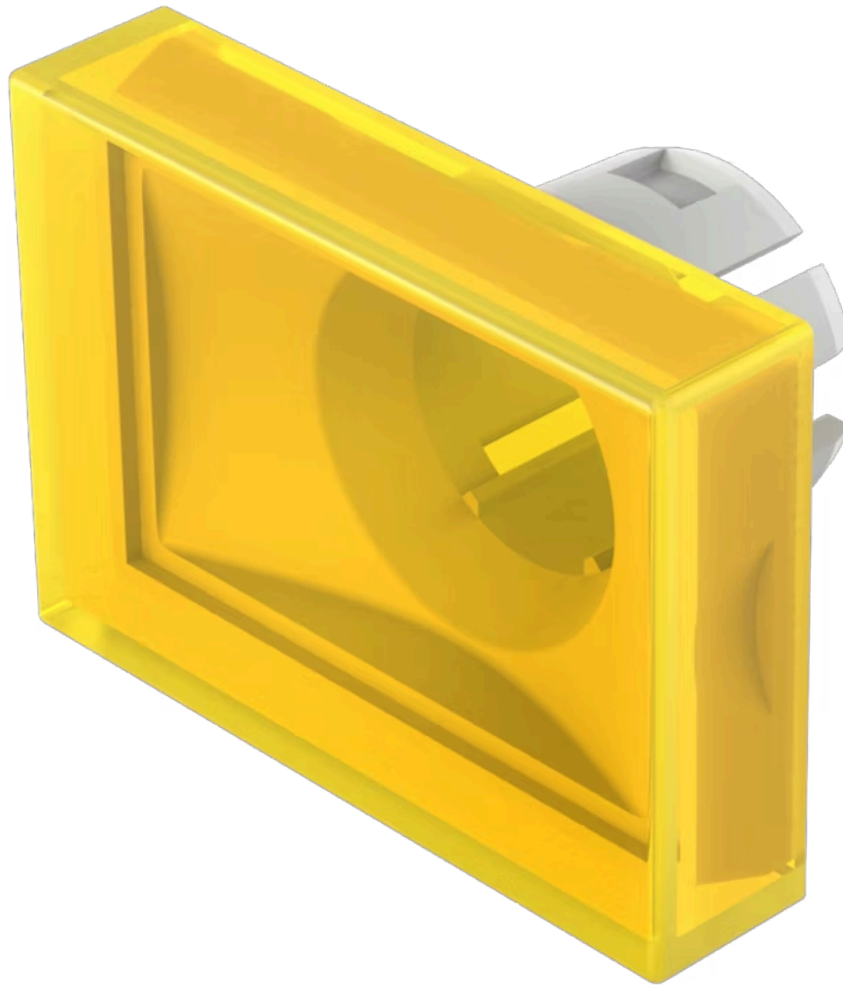


Lens

51-
901.4

Distribution by
Farnell



<https://farnell.eao.com/component/51-901.4/en...>

Your product:



51-901.4 Lens

FRONT

Front form: Rectangular

OPERATING-/INDICATION PART

Lens colour: Yellow

Lens material: Plastic

Lens illumination: Illuminated

Lens shape: Flush

Lens optics: translucent

MECHANICAL CHARACTERISTICS

Weight: 0.002 kg

CERTIFICATE

REACH: REACH compliant

RoHS: RoHS compliant

OTHER

Short Description: Lens, 21.5 mm x 15.3 mm, Illuminated, Yellow, Flush, Plastic

Dimension: 21.5 mm x 15.3 mm

Product attributes: Not recommended for film insert