

Lens

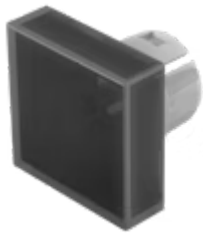
51-
953.1

Distribution by
Farnell



<https://farnell.eao.com/p/51-953.1>

Your product:



51-953.1 Lens

FRONT

Front form: Square

OPERATING-/INDICATION PART

Lens colour: Smokey black

Lens material: Plastic

Lens illumination: Illuminated

Lens shape: Flush

Lens optics: transparent

MECHANICAL CHARACTERISTICS

Weight: 0.001 kg

CERTIFICATE

REACH: REACH compliant

RoHS: RoHS compliant

OTHER

Short Description: Lens, 15.3 mm x 15.3 mm, Illuminated, Smokey black, Flush, Plastic

Dimension: 15.3 mm x 15.3 mm