

Lens

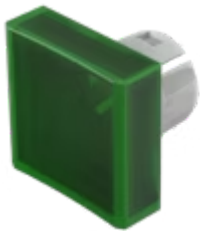
51-
954.5

Distribution by
Farnell



<https://farnell.eao.com/component/51-954.5/en...>

Your product:



51-954.5 Lens

FRONT

Front form: Square

OPERATING-/INDICATION PART

Lens colour: Green

Lens material: Plastic

Lens illumination: Illuminated

Lens shape: Concave

Lens optics: transparent

MECHANICAL CHARACTERISTICS

Weight: 0.001 kg

CERTIFICATE

REACH: REACH compliant

RoHS: RoHS compliant

OTHER

Short Description: Lens, 15.3 mm x 15.3 mm, Illuminated, Green, Concave, Plastic

Dimension: 15.3 mm x 15.3 mm