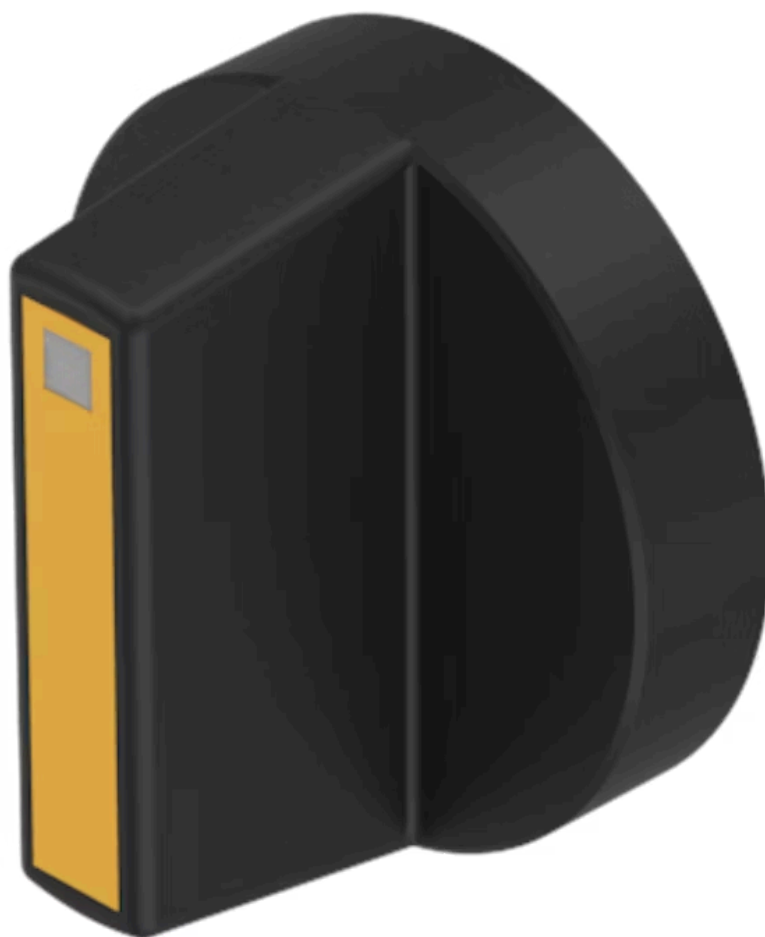


Lever

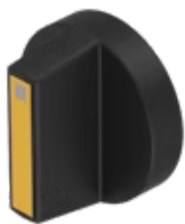
52-
928.40

Distribution by
Farnell



<https://farnell.eao.com/component/52-928.40/e...>

Your product:



52-928.40
Lever

OPERATING-/INDICATION PART

Lever colour:	Black
Lever bar colour:	Yellow
Lever material:	plastic
Lever shape:	short

MECHANICAL CHARACTERISTICS

Weight:	0.001 kg
---------	----------

CERTIFICATE

REACH:	REACH compliant
RoHS:	RoHS compliant

OTHER

Short Description:	Lever, illuminative, Yellow, Black, short, plastic
Product attributes:	With bar and marking dot
Hints:	With bar and marking dot