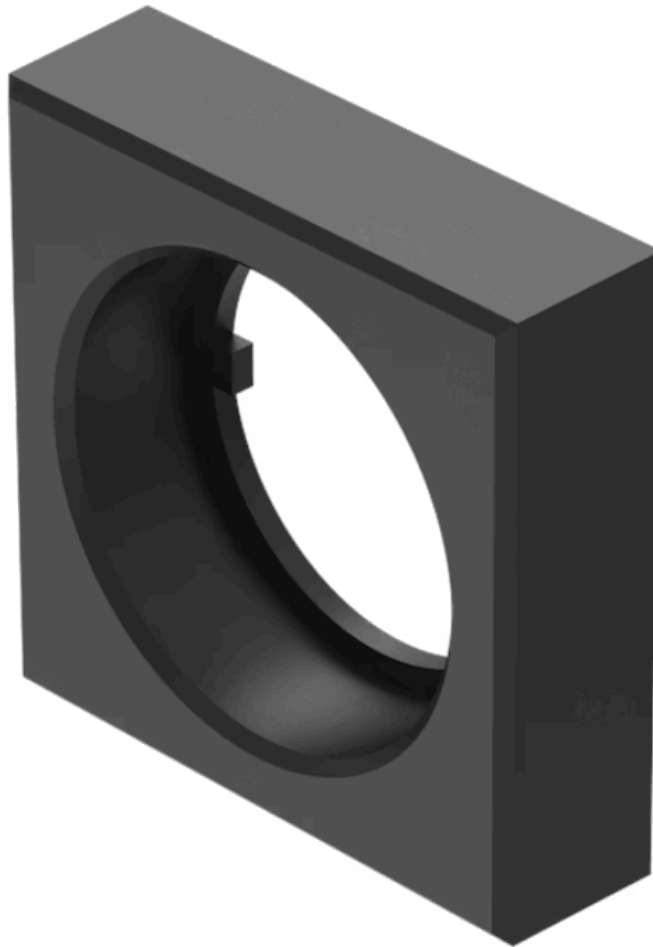


Front bezel for Selector switch

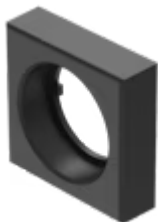
52-950.0

Distribution by
Farnell



<https://farnell.eao.com/component/52-950.0/en...>

Your product:



52-950.0

Front bezel for Selector switch

FRONT

Front dimension:	24 mm x 24 mm
Front form:	Square
Front bezel colour:	Black
Front bezel material:	Plastic, according to UL 94 V0

MECHANICAL CHARACTERISTICS

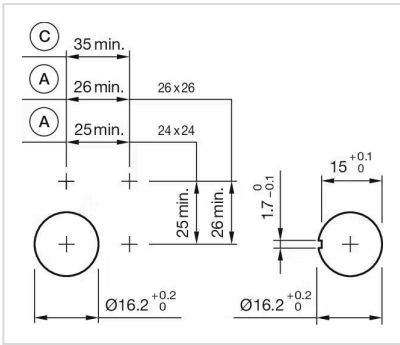
Weight:	0.003 kg
----------------	----------

CERTIFICATE

REACH:	REACH compliant
RoHS:	RoHS compliant

OTHER

Short Description:	Front bezel for Selector switch, 24 mm x 24 mm, Black, Plastic, according to UL 94 V0
Dimension:	24 mm x 24 mm
Mounting cut-outs:	



A = Solder/Plug-in terminal 2.8 mm x 0.5 mm
 C = Screw terminal