

Actuator

61-1140.0

Distribution by
Farnell



<https://farnell.eao.com/component/61-1140.0/e...>

Your product:



61-1140.0 Actuator

FRONT

Front bezel colour: Black

Front bezel material: Plastic

MOUNTING

Mounting type: Panel mounting

OPERATING-/INDICATION PART

Lens illumination: Illuminated

MECHANICAL CHARACTERISTICS

Switching action: Momentary

Mechanical lifetime: According to DIN/IEC 60512-5-6 and EN/IEC 60947-5-1, 2 Mil. cycles of operation

Operating force: 3 N ... 5 N snap-action switching element, 3.5 ... 11 N slow-make switching element

Operating Travel: 3 mm

Tightening torque: Max. 0.5 Nm

Weight: 0.005 kg

AMBIENT CONDITION

IP Protection: IP40 rear side, according to EN IEC 60529, IP67 front side, according to EN IEC 60529

Operating temperature: – 25 °C ... + 55 °C

Storage temperature: – 40 °C ... + 85 °C

CERTIFICATE

REACH: REACH compliant

RoHS: RoHS compliant

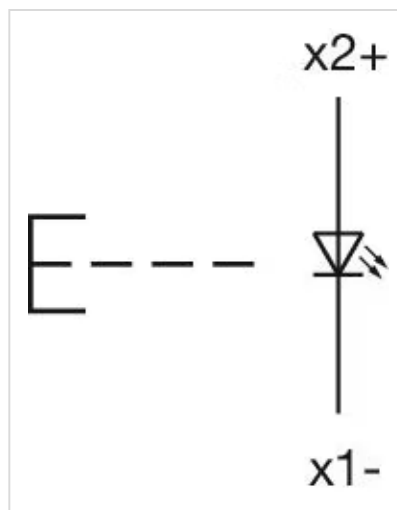
OTHER

Short Description: Actuator, Illuminated, Black, Plastic, Momentary

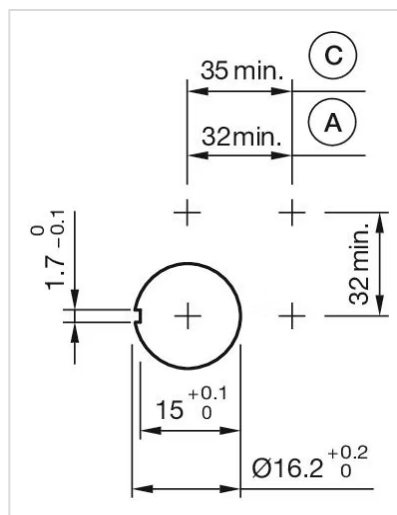
Housing colour: Black

Housing material: Plastic, according to UL 94 V0, self-extinguishing

Wiring diagrams:

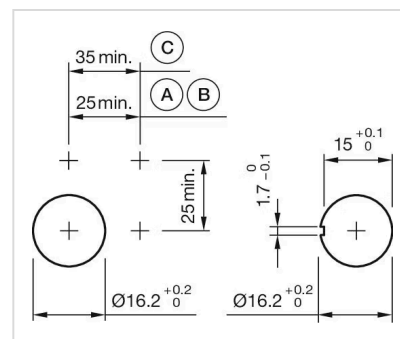


Mounting cut-outs:



A = Solder/Plug-in terminal 2.8 mm x 0.5 mm

C = Screw terminal

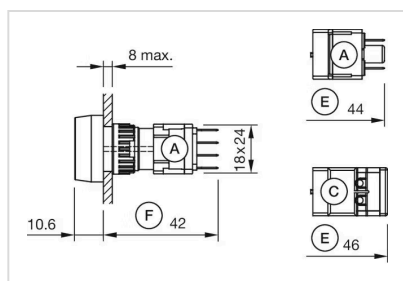


A = Solder/Plug-in terminal 2.8 mm x 0.5 mm

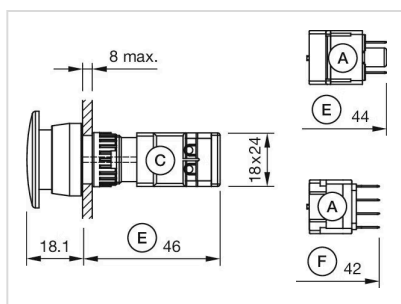
B = Solder terminal

C = Screw terminal

Dimension drawings:



A = Plug-in terminal 2.8 mm x 0.5 mm
 C = Screw terminal
 E = Slow-make switching element
 F = Snap-action switching element



A = Plug-in terminal 2.8 mm x 0.5 mm
 C = Screw terminal
 E = Slow-make switching element
 F = Snap-action switching element