

Actuator

61-1300.0

Distribution by
Farnell



<https://farnell.eao.com/component/61-1300.0/e...>

Your product:



61-1300.0 Actuator

MOUNTING

Mounting type: Panel mounting

OPERATING-/INDICATION PART

Lens illumination: Illuminated

MECHANICAL CHARACTERISTICS

Switching action: Maintained or momentary

Mechanical lifetime: According to DIN/IEC 60512-5-6 and EN/IEC 60947-5-1, 1 Mil. cycles of operation (maintain), 2 Mil. cycles of operation (momentary)

Operating force: 3 N ... 5 N snap-action switching element, 3.5 ... 11 N slow-make switching element

Operating Travel: 3 mm

Tightening torque: Max. 0.5 Nm

Weight: 0.004 kg

AMBIENT CONDITION

IP Protection: IP40 rear side, according to EN IEC 60529, IP67 front side, according to EN IEC 60529

Operating temperature: – 25 °C ... + 55 °C

Storage temperature: – 40 °C ... + 85 °C

CERTIFICATE

REACH: REACH compliant

RoHS: RoHS compliant

OTHER

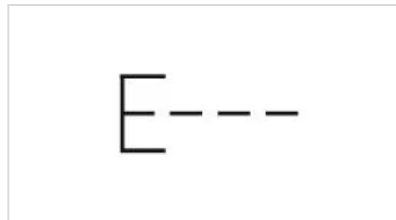
Short Description: Actuator, Illuminated, Maintained or momentary

Housing colour: Black

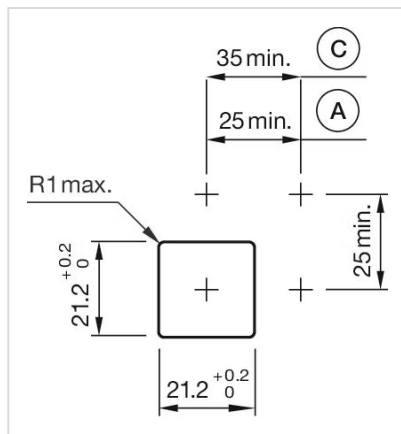
Housing material: Plastic, according to UL 94 V0, self-extinguishing

Product attributes: Convertible from momentary to maintained action

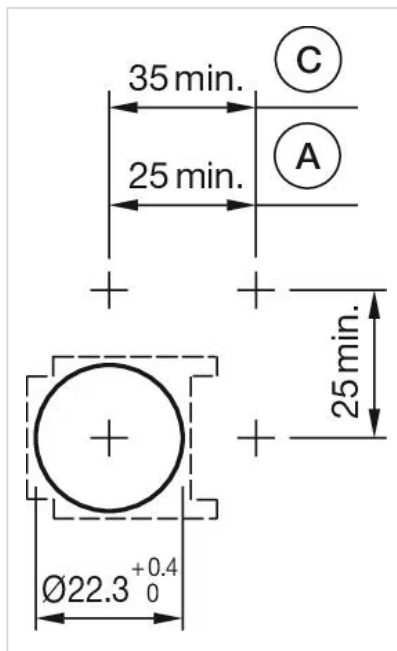
Wiring diagrams:



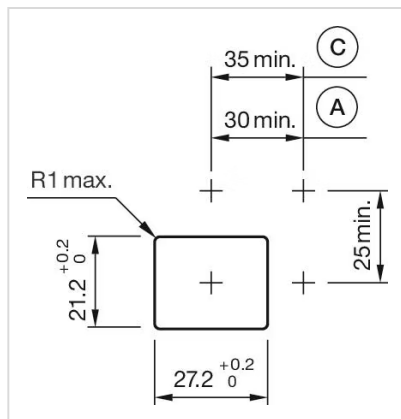
Mounting cut-outs:



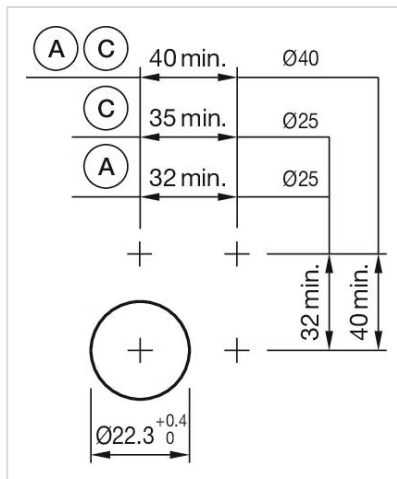
A = Solder/Plug-in terminal 2.8 mm x 0.5 mm
C = Screw terminal



A = Solder/Plug-in terminal 2.8 mm x 0.5 mm
C = Screw terminal

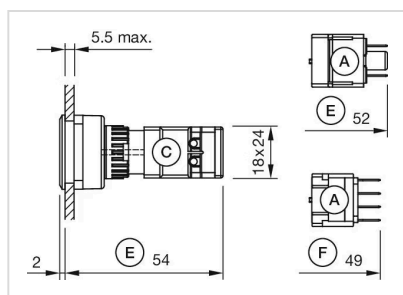


A = Solder/Plug-in terminal 2.8 mm x 0.5 mm
C = Screw terminal

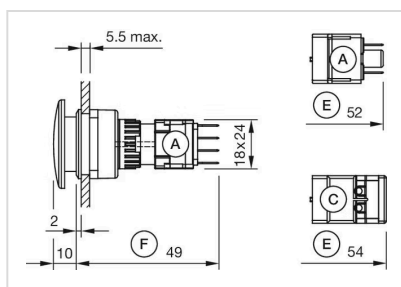


A = Solder/Plug-in terminal 2.8 mm x 0.5 mm
B = Solder terminal
C = Screw terminal

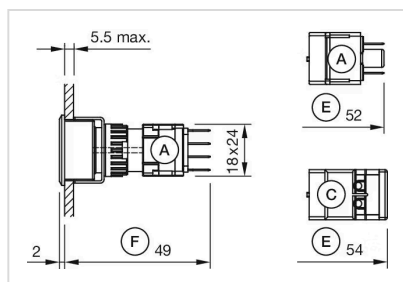
Dimension drawings:



A = Plug-in terminal 2.8 mm x 0.5 mm
 C = Screw terminal
 E = Slow-make switching element
 F = Snap-action switching element



A = Plug-in terminal 2.8 mm x 0.5 mm
 C = Screw terminal
 E = Slow-make switching element
 F = Snap-action switching element



A = Plug-in terminal 2.8 mm x 0.5 mm
 C = Screw terminal
 E = Slow-make switching element
 F = Snap-action switching element