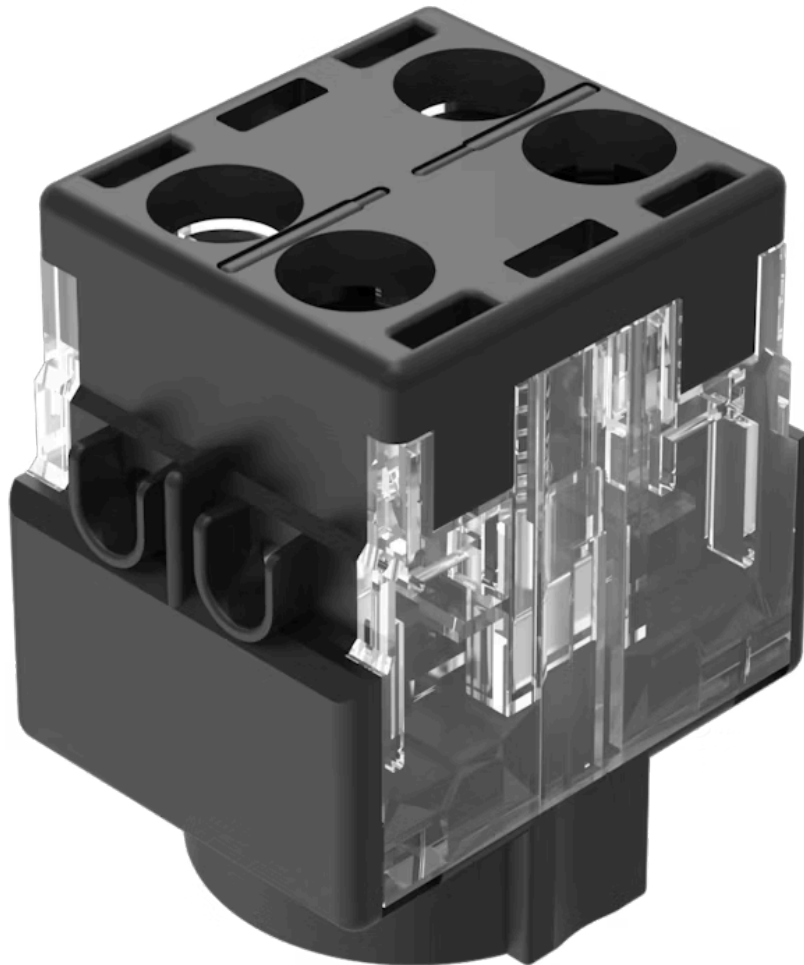


Switching element

61-8610.11

Distribution by
Farnell



<https://farnell.eao.com/component/61-8610.11/...>

Your product:



61-8610.11 Switching element

Loading ...

ELECTRICAL CHARACTERISTICS

Switching voltage and switching current:

Switch rating AC with silver contact		
Service category AC-15		
according to EN IEC 60947-5-1		
Voltage	125 VAC	250 VAC
Current	3 A	2 A
Switch rating DC with silver contact		
Service category DC-13		
according to EN IEC 60947-5-1		
Voltage	250 VDC	
Current	0.2 A	

Contacts:

1 NO

Contact resistance:

New state $\leq 50 \text{ m}\Omega$, as per DIN/IEC 60512-2-4, measured at 100 mA, 10 V

Rated Operational Voltage U_e :

250 VAC/DC according to EN IEC 60947-1

Rated impulse withstand voltage U_{imp} :

4 kV, according to EN/IEC 60947-5-1

Rated insulation voltage U_i :

320 VAC, according to EN / IEC 60947-5-1

Recommended minimum operational data:

Voltage	20 VAC/DC
Current	100 mA

Switching rating:

250 V AC/DC @ 5 A

Electrical lifetime:

$\geq 50\,000$ cycles of operation at 250VAC, 2A, $\cos\phi 0.95$,

Electric strength:

4000 VAC, 50 Hz, 1 minute, as per DIN / IEC 60512-2 between all terminals and earth

Overvoltage category:

III, according to EN / IEC 60947-5-1

Pollution degree:

2, according to EN IEC 60947-1

Protection class:

II, according to EN / IEC 61058-1

Standards:

The switches comply with the "Standards for low-voltage switching devices" EN IEC 61058-1, EN IEC 60947-5-1

Thermal current I_{th} :

5 A, according to EN / IEC 60947-5-1

MECHANICAL CHARACTERISTICS

Terminal:	Screw terminal
Contact material:	Silver
Switching system:	Slow-make switching element
Switching system:	Double-break slow-make system, contact opening width 2 x 1.5 mm, with 2 x 2 contact points per switching element. NC-contact elements in the slow-make elements fulfill requirements of switches with forced opening as per EN / IEC 60947-5-12.17.
Switching positions:	2 positions
Wire cross section:	1 wire flexible: 0.5 ... 0.75 mm ² 1 wire super flexible: 0.5 mm ² 1 wire rigid: 0.5 ... 1.5 mm ² 2 wires super flexible: 0.5 mm ² 2 wires flexible: 0.5 mm ² 2 wires rigid: 0.75 mm ²
Weight:	0.016 kg

AMBIENT CONDITION

IP Protection:	IP40
Operating temperature:	- 25 °C ... + 55 °C
Storage temperature:	- 40 °C ... + 85 °C
Shock resistance:	Max. 100 m / s ² , pulse width, 3-axis (sinusoidal EN IEC 60068-2-27)
Vibration resistance:	Max. 100 m / s ² from 10 Hz ... 500 Hz, (sinusoidal EN IEC 60068-2-6)
Climate resistance:	Damp heat, cyclic: 96 hours, + 25 °C/97 %, + 55 °C/93 % relative humidity, as per EN IEC 60068-2-30 Damp heat, steady: 56 days, + 40 °C/93 % relative humidity, according to EN IEC 60068-2-78 Rapid change of temperature: 100 cycles, - 40 °C ... + 80 °C, as per EN / IEC 60068-2-14

CERTIFICATE

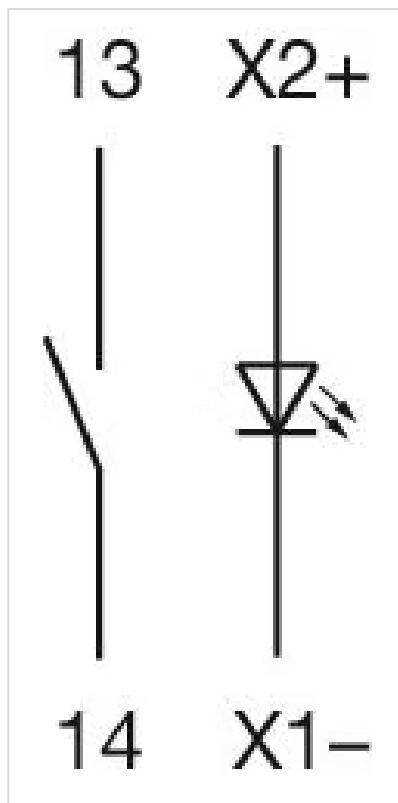
Approbations:	CB (IEC 61058-1), CQC, CSA, DNV, ENEC (EN 61058-1), UL, VDE
Conformities:	CE, UKCA, 2011 / 65 / EC (RoHS), 2014 / 35 / EU (LVD)
REACH:	REACH compliant
RoHS:	RoHS compliant

OTHER

Short Description:	Switching element, Slow-make switching element, 250 V AC/DC @ 5 A, Silver, 1 NO, Screw terminal
Material:	Plastic, according to UL 94 V0
Product attributes:	

With lamp terminal

Wiring diagrams:



Component layouts:

