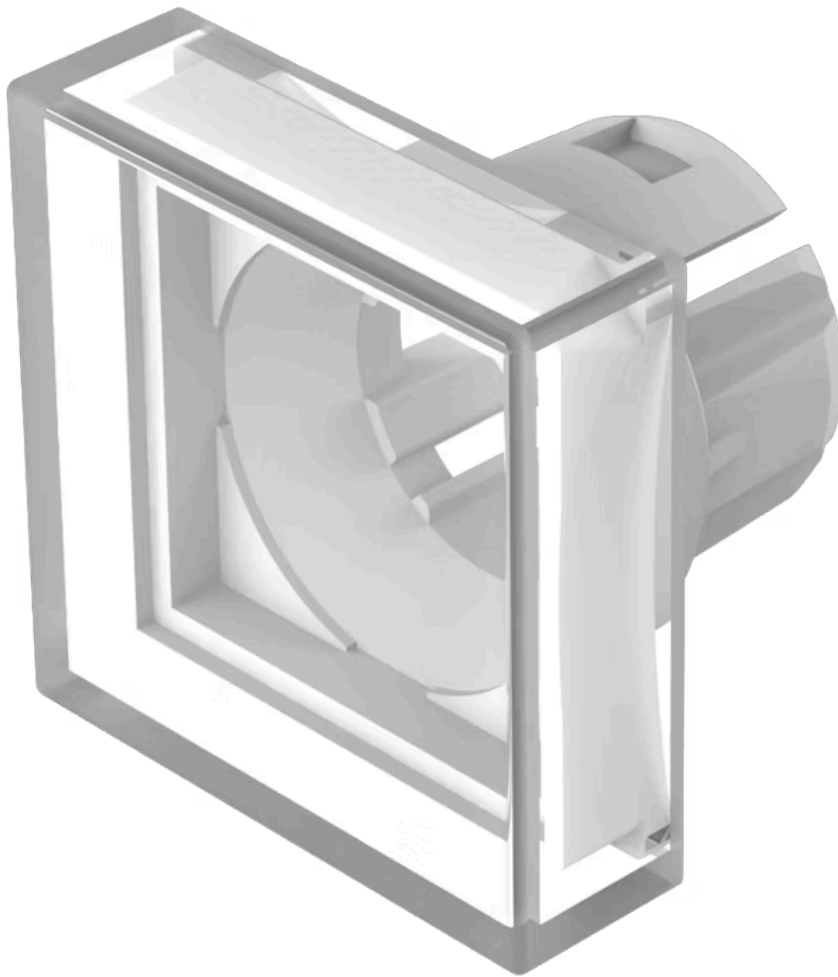


Lens

61-
9221.9

Distribution by
Farnell



<https://farnell.eao.com/p/61-9221.9>

Your product:



61-9221.9 Lens

FRONT

Front form: Square

OPERATING-/INDICATION PART

Lens colour: White

Lens material: Plastic, according to UL 94 HB

Lens illumination: Non illuminated

Lens shape: Flush

Lens optics: translucent

MECHANICAL CHARACTERISTICS

Weight: 0.002 kg

CERTIFICATE

REACH: REACH compliant

RoHS: RoHS compliant

OTHER

Short Description: Lens, 15.3 mm x 15.3 mm, Non illuminated, White, Flush, Plastic, according to UL 94 HB

Dimension: 15.3 mm x 15.3 mm