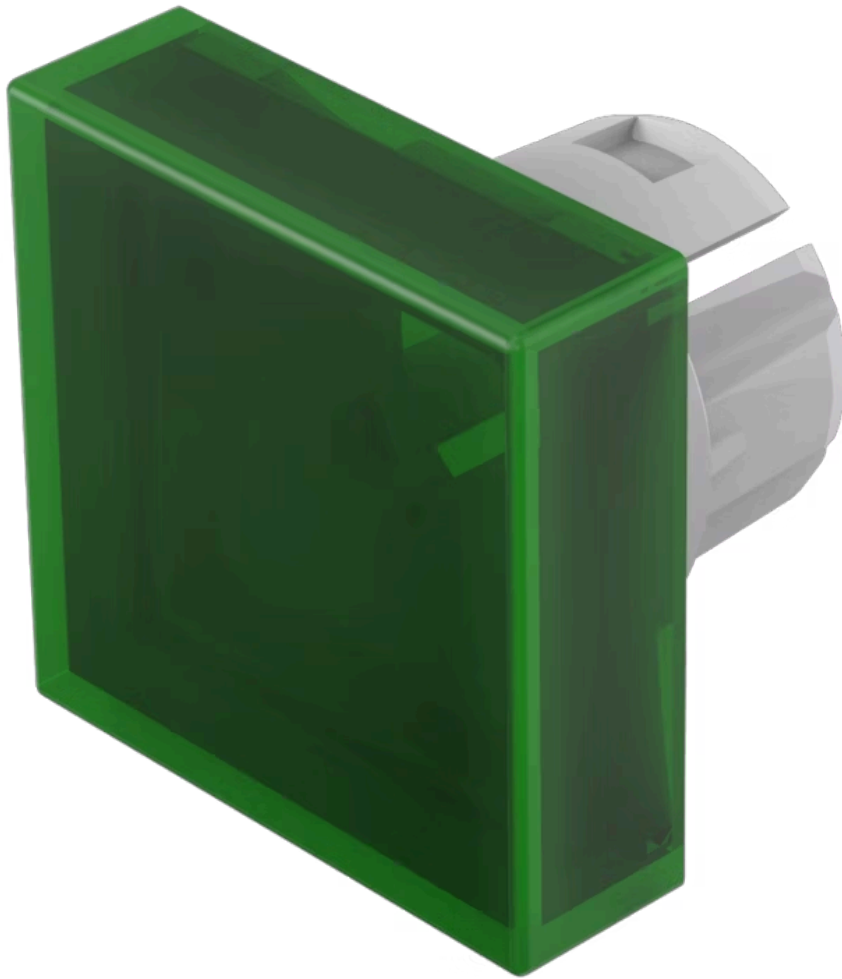


Lens

61-
9321.5

Distribution by
Farnell



<https://farnell.eao.com/p/61-9321.5>

Your product:



61-9321.5 Lens

FRONT

Front form: Square

OPERATING-/INDICATION PART

Lens colour: Green

Lens material: Plastic, according to UL 94 HB

Lens illumination: Illuminated

Lens shape: Flush

Lens optics: transparent

MECHANICAL CHARACTERISTIC

Weight: 0.002 kg

CERTIFICATE

REACH: REACH compliant

RoHS: RoHS compliant

OTHER

Short Description: Lens, 15.3 mm x 15.3 mm, Illuminated, Green, Flush, Plastic, according to UL 94 HB

Dimension: 15.3 mm x 15.3 mm