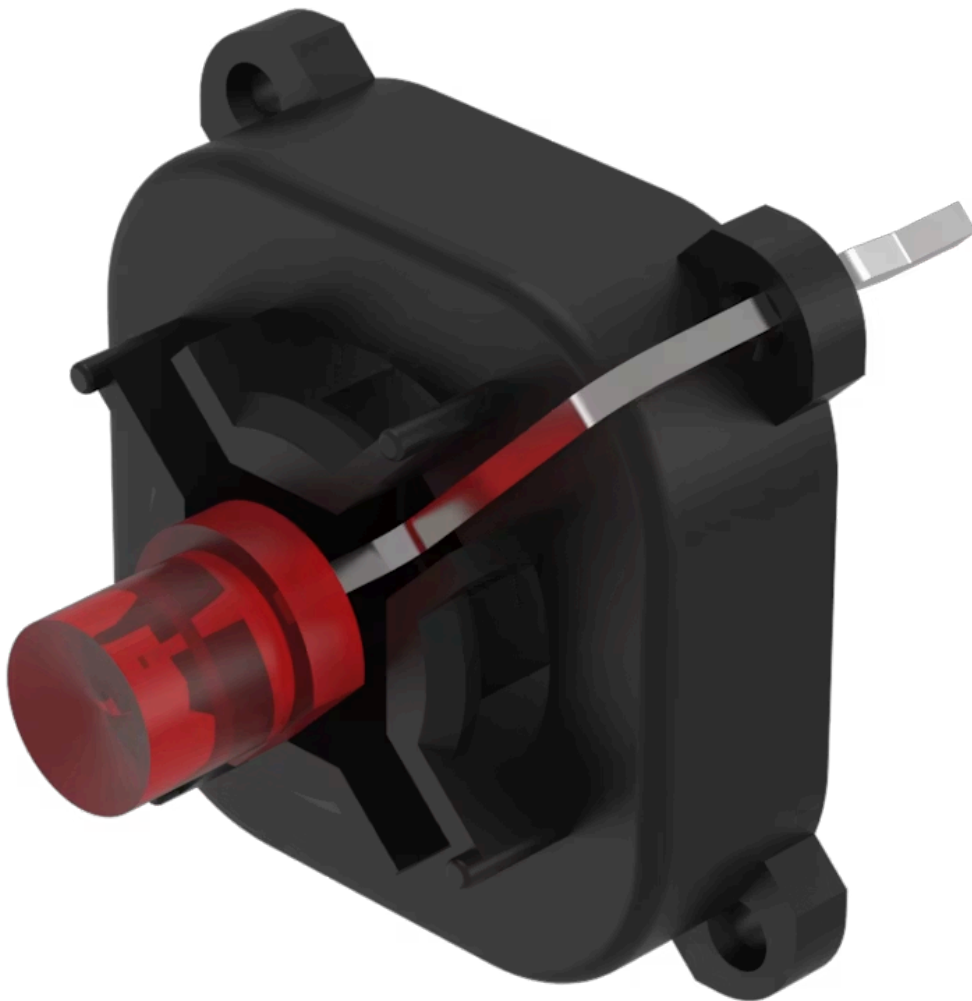


# Indicator element

70-820.2S

Distribution by  
Farnell



<https://farnell.eao.com/component/70-820.2S/e...>

Your product:

---



## 70-820.2S Indicator element

*Loading ...*

### OPERATING-/INDICATION PART

**Illumination colour:** Red

### ELECTRICAL CHARACTERISTICS

**Forward voltage:** 2.0 V DC @ 20 mA

**Operating voltage:** 2 DC

**Lumi. Intensity:** 160 mcd

### MECHANICAL CHARACTERISTICS

**Terminal:** PCB terminal

**Weight:** 0.001 kg

### CERTIFICATE

**REACH:** REACH compliant

**RoHS:** RoHS compliant

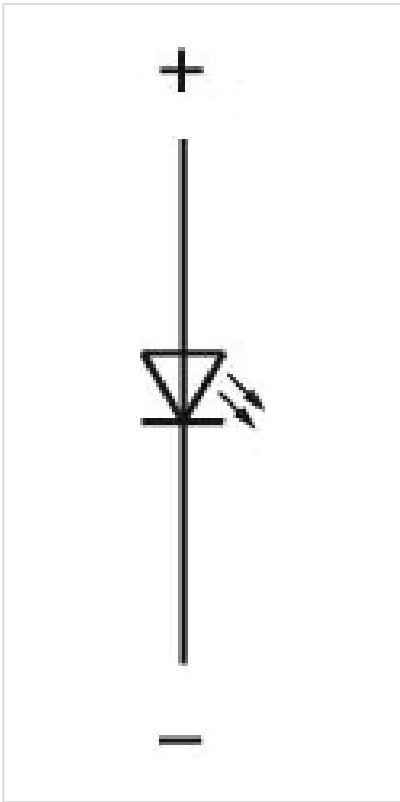
### OTHER

**Short Description:** Indicator element, Red, Single-LED, 2 DC, PCB terminal

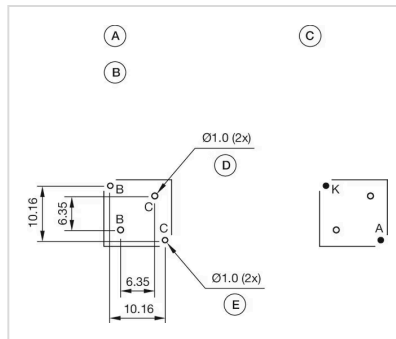
**Kind of illumination:** Single-LED

**Hints:** The customer has to decide what series resistor shall be used to the LED

**Wiring diagrams:**



**Component layouts:**



- A = Illumination element
- B = Single LED
- C = Drilling plan (component side)
- D = Hole for centering pins non-metallic
- E = Hole for LED

**Dimension drawings:**

