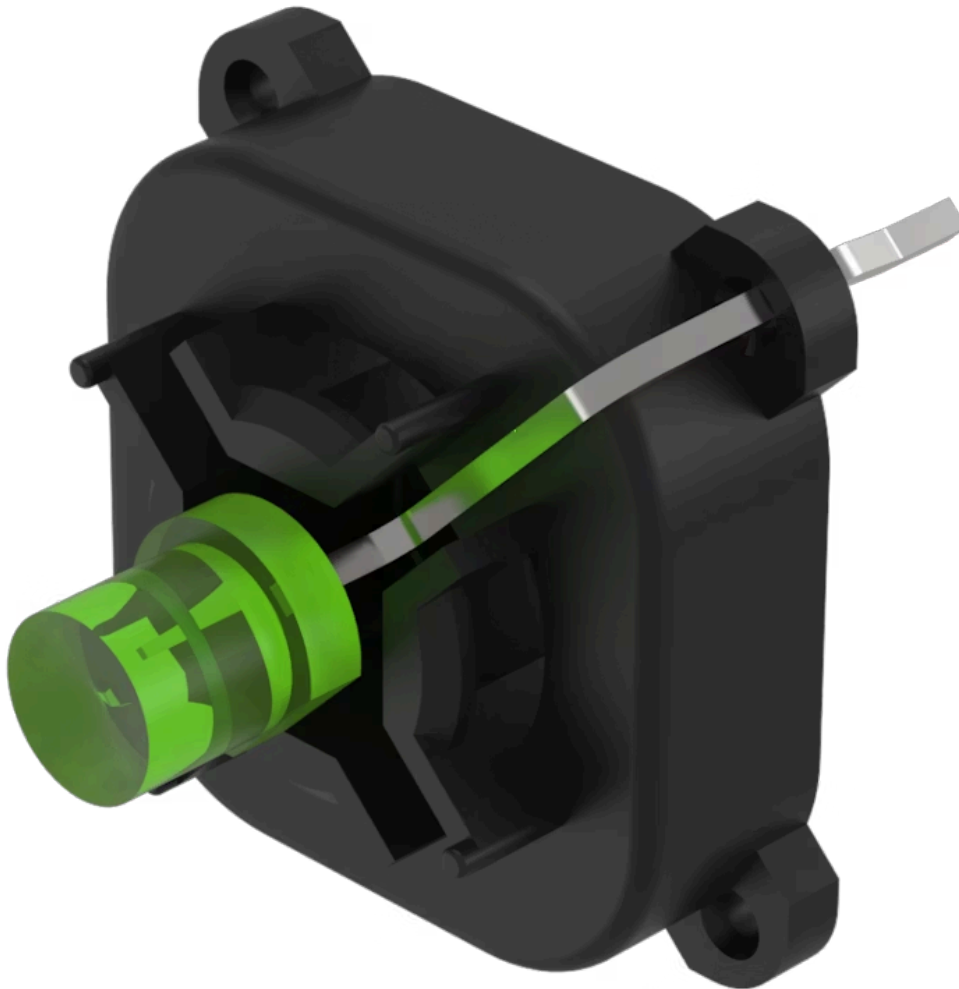


Indicator element

70-820.5S

Distribution by
Farnell



<https://farnell.eao.com/component/70-820.5S/e...>

Your product:



70-820.5S

Indicator element

OPERATING-/INDICATION PART

Illumination colour: Green

ELECTRICAL CHARACTERISTICS

Operating voltage: 3 DC

Lumi. Intensity: 650 mcd

MECHANICAL CHARACTERISTICS

Terminal: PCB terminal

Weight: 0.001 kg

CERTIFICATE

REACH: REACH compliant

RoHS: RoHS compliant

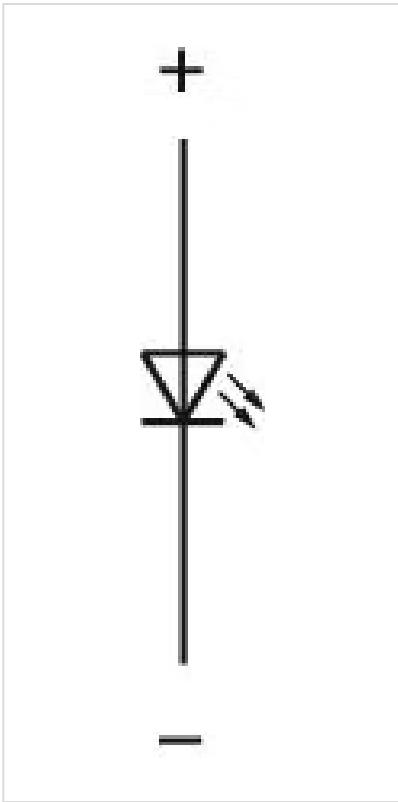
OTHER

Short Description: Indicator element, Green, Single-LED, 3 DC, PCB terminal

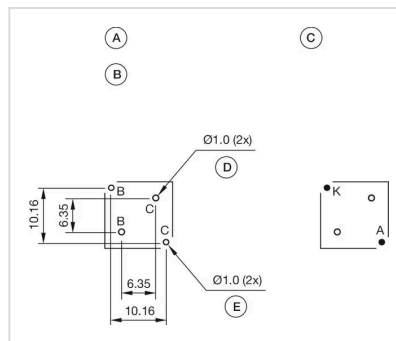
Kind of illumination: Single-LED

Hints: The customer has to decide what series resistor shall be used to the LED

Wiring diagrams:



Component layouts:



- A = Illumination element
- B = Single LED
- C = Drilling plan (component side)
- D = Hole for centering pins non-metallic
- E = Hole for LED

Dimension drawings:

