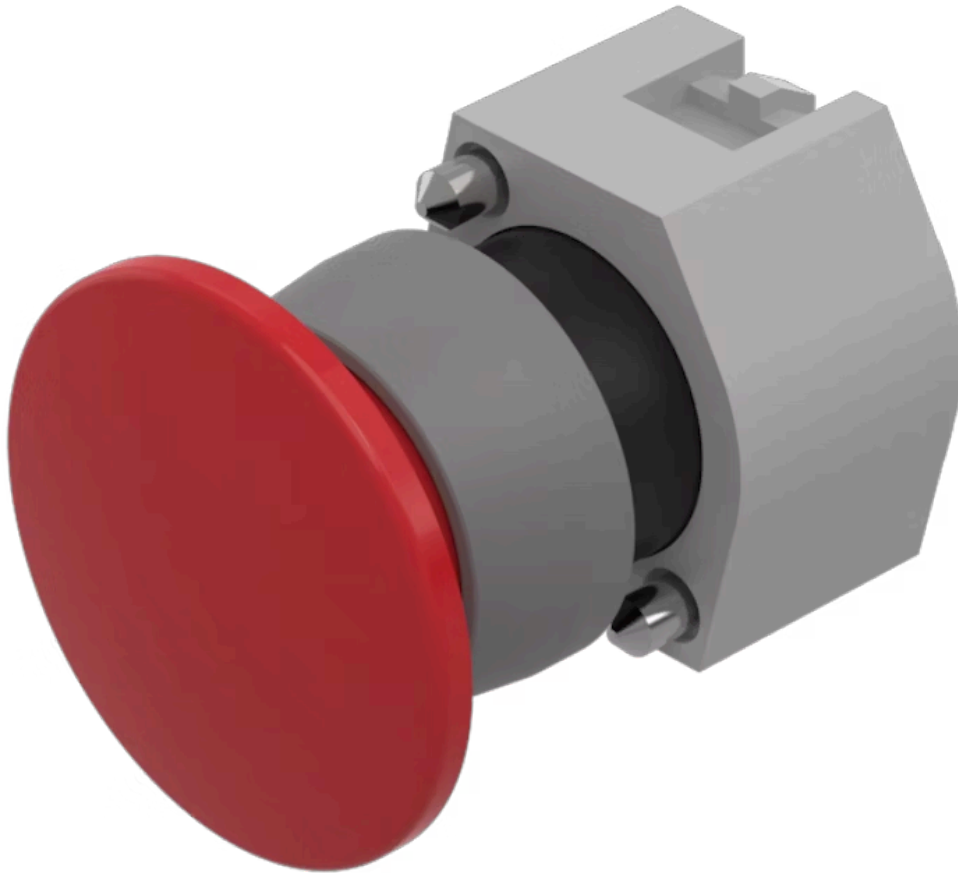


# Actuator

704.072.2

Distribution by  
Farnell



<https://farnell.eao.com/p/704.072.2>

Your product:

---



## 704.072.2 Actuator

### FRONT

|                       |         |
|-----------------------|---------|
| Front dimension:      | Ø 40 mm |
| Front form:           | Round   |
| Front bezel colour:   | Grey    |
| Front bezel material: | Plastic |

### MOUNTING

|                |                |
|----------------|----------------|
| Design:        | Raised         |
| Mounting type: | Panel mounting |

### OPERATING-/INDICATION PART

|                    |                 |
|--------------------|-----------------|
| Lens colour:       | Red             |
| Lens material:     | Plastic         |
| Lens illumination: | Non illuminated |
| Lens shape:        | Mushroom-head   |
| Lens optics:       | opaque          |

### MECHANICAL CHARACTERISTICS

|                      |                             |
|----------------------|-----------------------------|
| Switching action:    | Maintained                  |
| Mechanical lifetime: | ≤3 Mil. cycles of operation |
| Weight:              | 0.041 kg                    |

### CERTIFICATE

**REACH:** REACH compliant

**RoHS:** RoHS compliant

## OTHER

**Short Description:** Actuator, Ø 40 mm, Mushroom-head, Non illuminated, Red, Plastic, opaque, Round, Grey, Plastic, Maintained

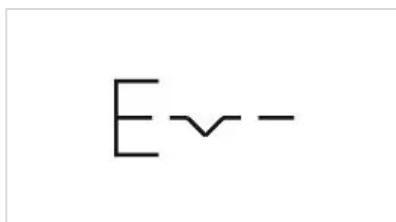
**Housing colour:** Grey

**Housing material:** Plastic

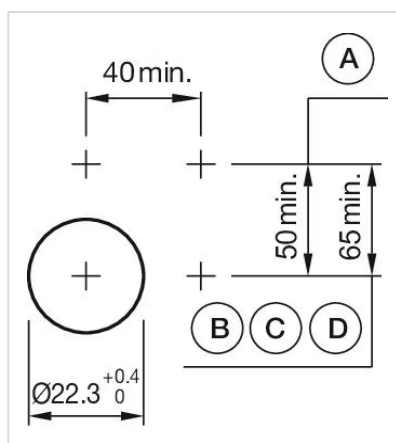
**Hints:** Max. 3 switching elements can be clipped on

**max. number of switching elements:** 3

**Wiring diagrams:**

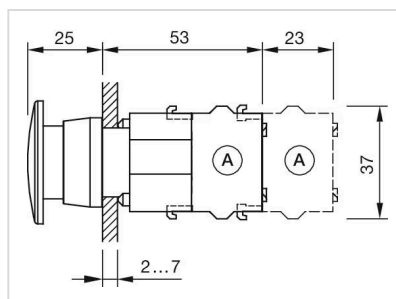


**Mounting cut-outs:**



A = Screw terminal  
B = Push-in terminal (PIT)  
C = Plug-in terminal 6.3 mm x 0.8 mm  
D = Double plug-in terminal 6.3 mm x 0.8 mm

**Dimension drawings:**



A = Screw terminal