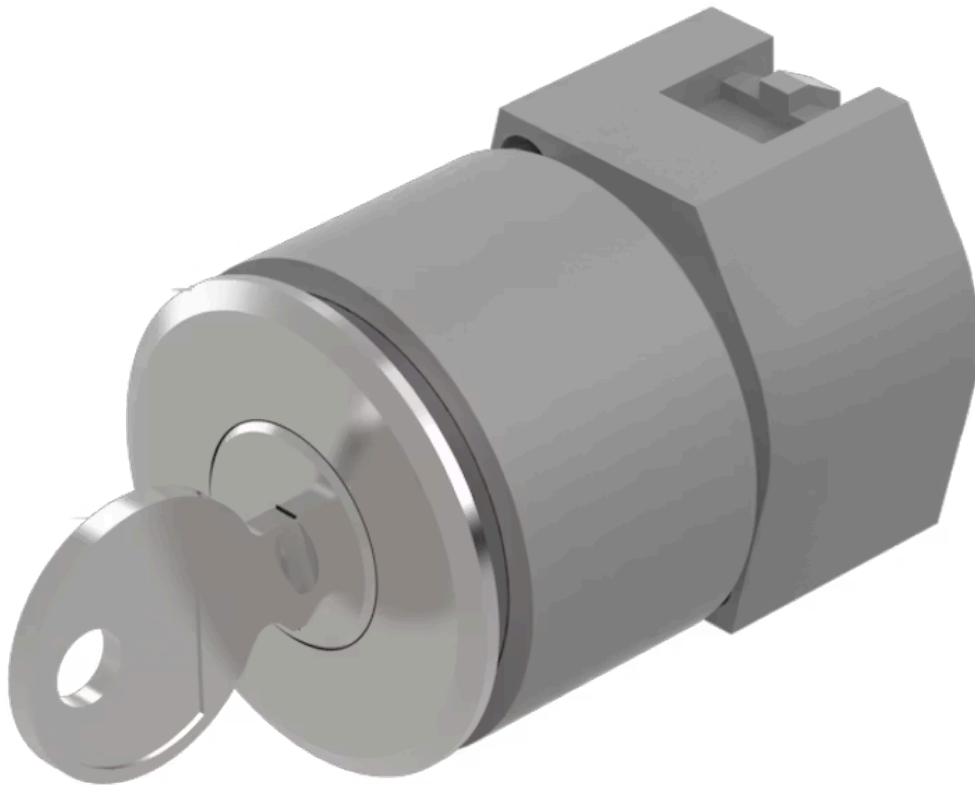


# Actuator

704.118.018

Distribution by  
Farnell



<https://farnell.eao.com/component/704.118.018...>

Your product:

---



## 704.118.018 Actuator

*Loading ...*

### FRONT

|                              |           |
|------------------------------|-----------|
| <b>Front dimension:</b>      | Ø 35 mm   |
| <b>Front form:</b>           | Round     |
| <b>Front bezel colour:</b>   | Nature    |
| <b>Front bezel material:</b> | Aluminium |

### MOUNTING

|                          |                |
|--------------------------|----------------|
| <b>Design:</b>           | Flush          |
| <b>Mounting cut-out:</b> | Ø 30.5 mm      |
| <b>Mounting type:</b>    | Panel mounting |

### ELECTRICAL CHARACTERISTICS

|                   |   |
|-------------------|---|
| <b>Standards:</b> | The switches comply with the "Standards for low-voltage switching devices" DIN EN 60947-1 |
|-------------------|---|

### MECHANICAL CHARACTERISTICS

|                             |                                   |
|-----------------------------|-----------------------------------|
| <b>Switching action:</b>    | Momentary - Rest (a) - Maintained |
| <b>Switching positions:</b> | 3 positions                       |
| <b>Switching angle:</b>     | 42° left / 42° right              |
| <b>Mechanical lifetime:</b> | ≤50 000 cycles of operation       |
| <b>Weight:</b>              | 0.1 kg                            |

### AMBIENT CONDITION

|                       |                 |
|-----------------------|-----------------|
| <b>IP Protection:</b> | IP65 front side |
|-----------------------|-----------------|

**Operating temperature:** - 40 °C ... + 55 °C

**Storage temperature:** - 40 °C ... + 85 °C

**CERTIFICATE**

**REACH:** REACH compliant

**RoHS:** RoHS compliant

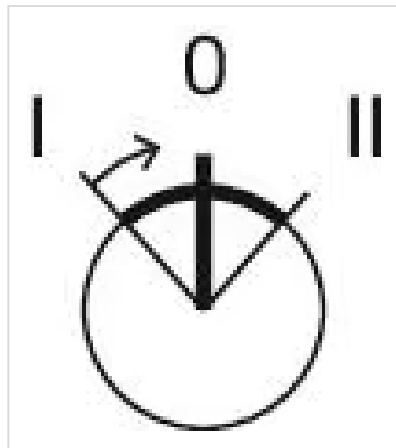
**OTHER**

**Short Description:** Actuator, Ø 30.5 mm, Ø 35 mm, Round, Nature, Aluminium, Momentary - Rest (a) - Maintained

**Hints:** The standard lock Ronis 251  
Further lock numbers on request  
Max. 3 switching elements can be clipped on

**max. number of switching elements:** 3

**Switching positions:**



**Wiring diagrams:**



**Mounting cut-outs:**



- A = Screw terminal
- B = Push-in terminal (PIT)
- C = Plug-in terminal 6.3 mm x 0.8 mm
- D = Double plug-in terminal 6.3 mm x 0.8 mm

**Dimension drawings:**



A = Screw terminal