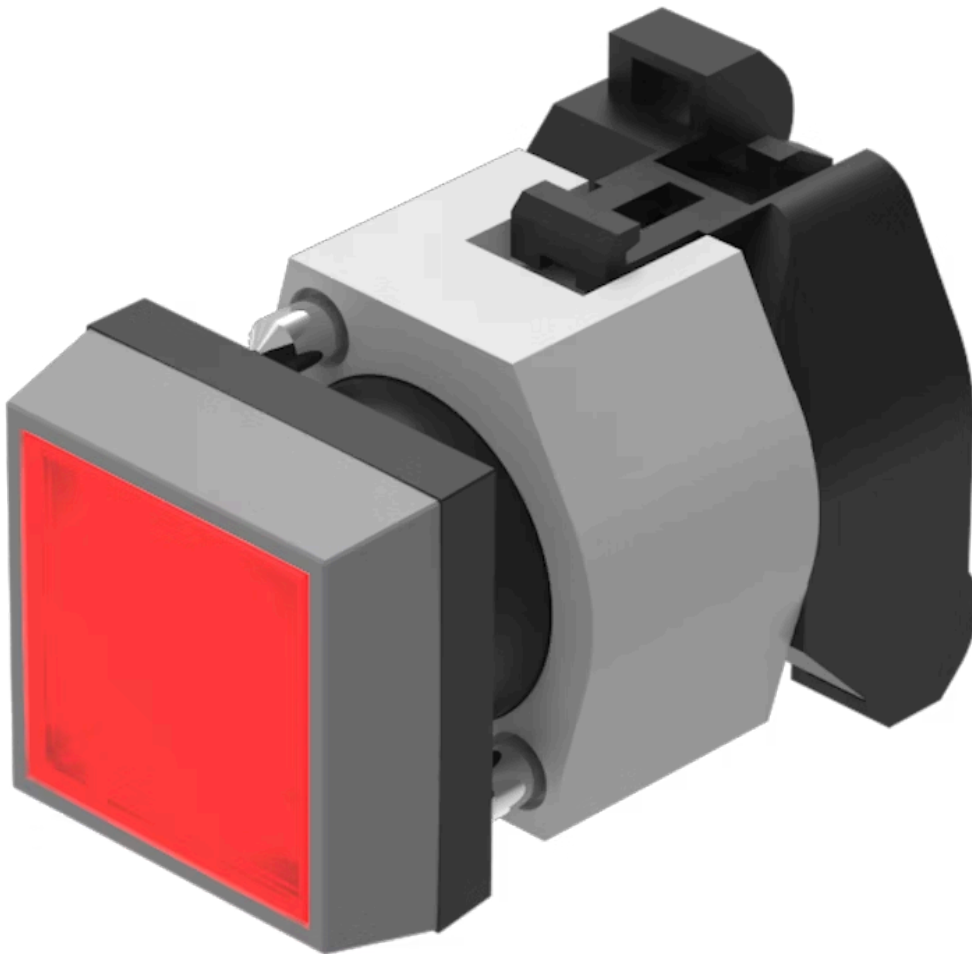


# Actuator

704.202.2

Distribution by  
Farnell



<https://farnell.eao.com/p/704.202.2>

Your product:

---



## 704.202.2 Actuator

### FRONT

Front dimension:	30 mm x 30 mm
Front form:	Square
Front bezel colour:	Grey
Front bezel material:	Plastic

### MOUNTING

Design:	Raised
Mounting type:	Panel mounting

### OPERATING-/INDICATION PART

Lens colour:	Red
Lens material:	Plastic
Lens shape:	Flush
Lens optics:	transparent
Marking plate colour:	White
Marking plate optics:	translucent
Marking plate illumination:	illuminative

### ELECTRICAL CHARACTERISTICS

Standards:	The switches comply with the "Standards for low-voltage switching devices" DIN EN 60947-1
------------	---

### MECHANICAL CHARACTERISTICS

**Terminal:** Screw terminal

**Weight:** 0.05 kg

## **AMBIENT CONDITION**

**IP Protection:** IP65 front side

**Operating temperature:** – 40 °C ... + 55 °C

**Storage temperature:** – 40 °C ... + 85 °C

## **CERTIFICATE**

**REACH:** REACH compliant

**RoHS:** RoHS compliant

## **OTHER**

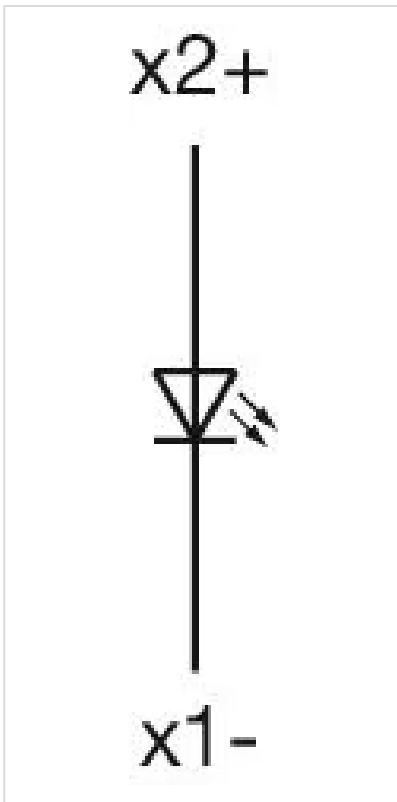
**Short Description:** Actuator, 30 mm x 30 mm, Flush, Red, Plastic, transparent, Square, Grey, Plastic, Screw terminal

**Housing colour:** Black

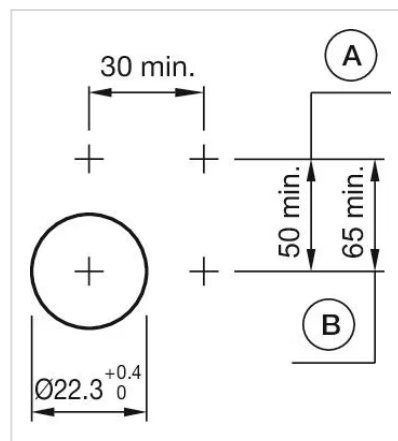
**Housing material:** Plastic

**Hints:** Filament lamp or LED

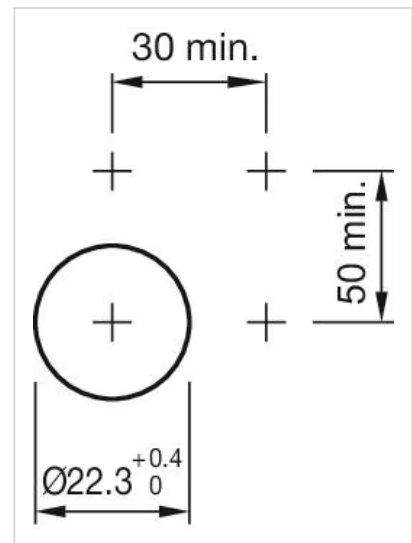
**Wiring diagrams:**



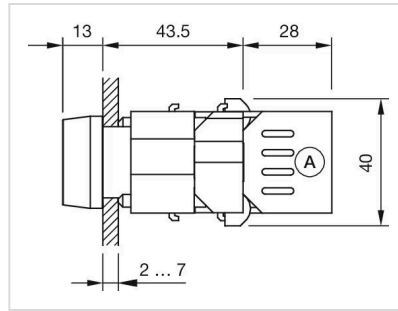
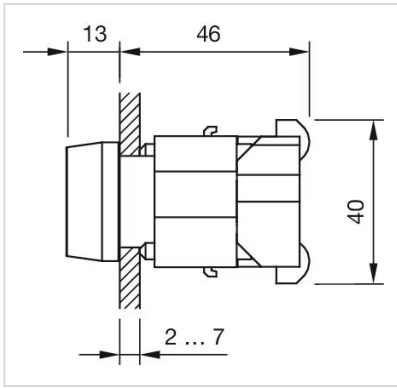
**Mounting cut-outs:**



A = Screw terminal  
B = Push-in terminal (PIT)



**Dimension drawings:**



A = Screw terminal