

Actuator

704.207.5

Distribution by
Farnell



<https://farnell.eao.com/p/704.207.5>

Your product:



704.207.5 Actuator

FRONT

| | |
|-----------------------|---------------|
| Front dimension: | 30 mm x 30 mm |
| Front form: | Square |
| Front bezel colour: | Black |
| Front bezel material: | Plastic |

MOUNTING

| | |
|----------------|----------------|
| Design: | Raised |
| Mounting type: | Panel mounting |

OPERATING-/INDICATION PART

| | |
|-----------------------------|--------------|
| Lens colour: | Green |
| Lens material: | Plastic |
| Lens shape: | Flush |
| Lens optics: | transparent |
| Marking plate colour: | Colourless |
| Marking plate optics: | transparent |
| Marking plate illumination: | illuminative |

ELECTRICAL CHARACTERISTICS

| | |
|------------|---|
| Standards: | The switches comply with the "Standards for low-voltage switching devices" DIN EN 60947-1 |
|------------|---|

MECHANICAL CHARACTERISTICS

Terminal: Screw terminal

Weight: 0.05 kg

AMBIENT CONDITION

IP Protection: IP65 front side

Operating temperature: – 40 °C ... + 55 °C

Storage temperature: – 40 °C ... + 85 °C

CERTIFICATE

REACH: REACH compliant

RoHS: RoHS compliant

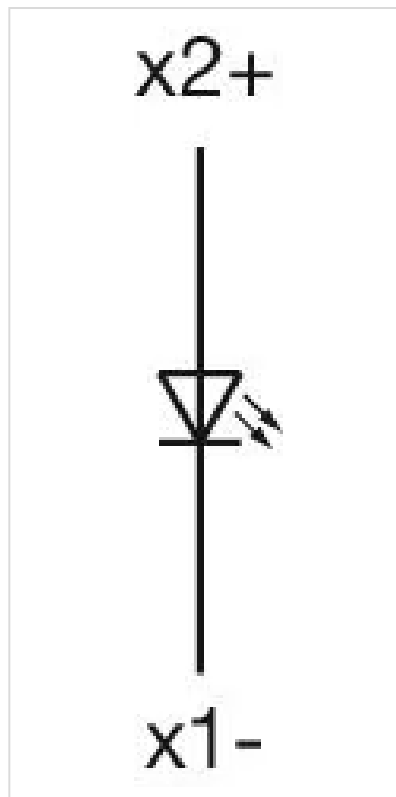
OTHER

Short Description: Actuator, 30 mm x 30 mm, Flush, Green, Plastic, transparent, Square, Black, Plastic, Screw terminal

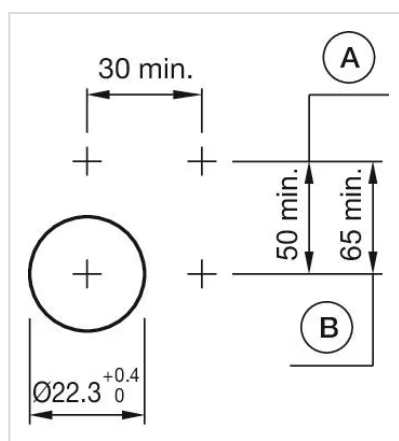
Housing colour: Black

Housing material: Plastic

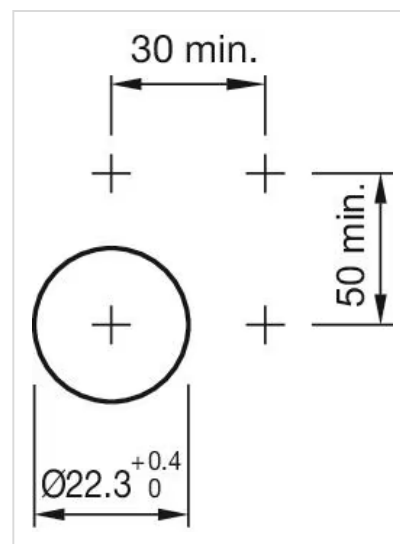
Wiring diagrams:



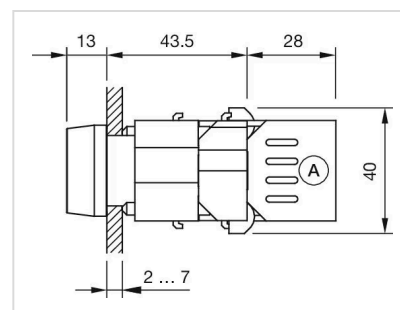
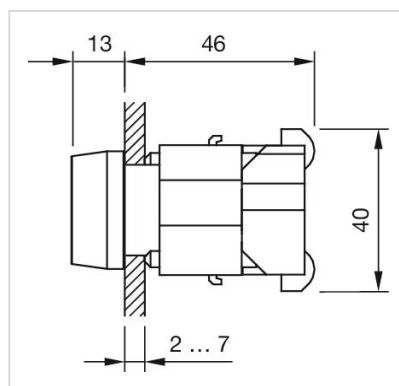
Mounting cut-outs:



A = Screw terminal
B = Push-in terminal (PIT)



Dimension drawings:



A = Screw terminal