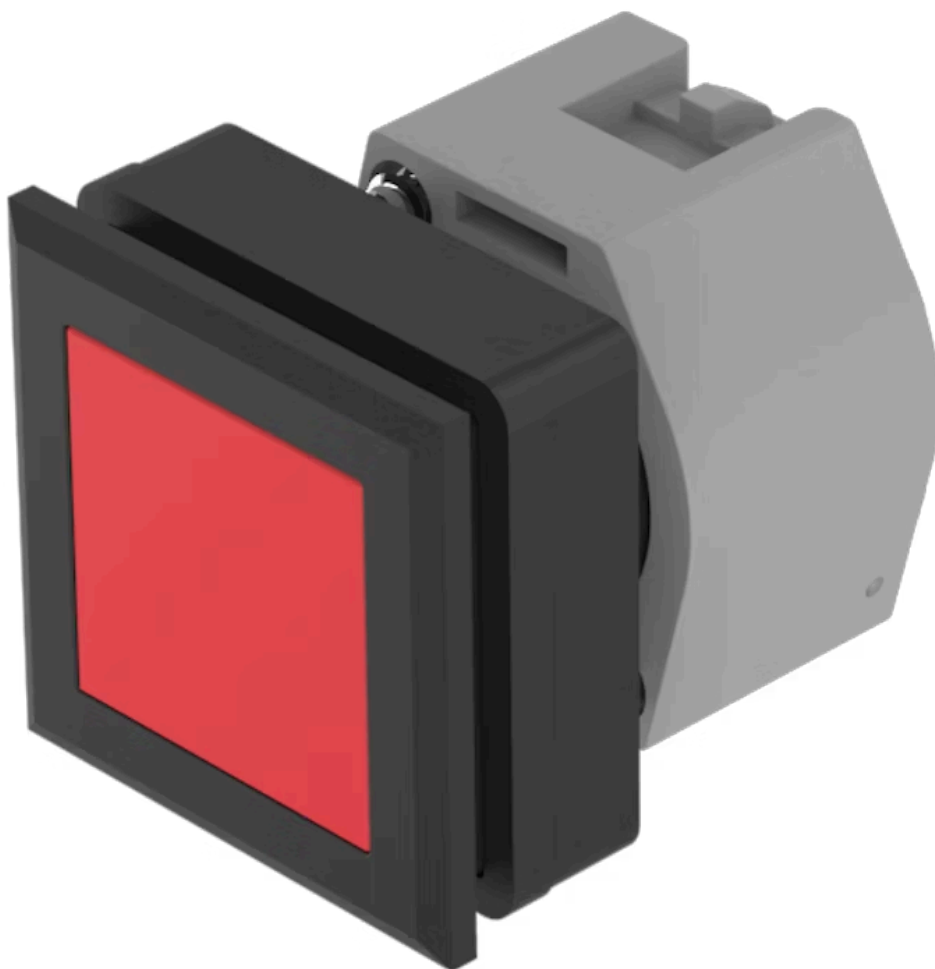


# Actuator

704.239.200

Distribution by  
Farnell



<https://farnell.eao.com/p/704.239.200>

Your product:

---



## 704.239.200 Actuator

### FRONT

|                       |               |
|-----------------------|---------------|
| Front dimension:      | 35 mm x 35 mm |
| Front form:           | Square        |
| Front bezel colour:   | Black         |
| Front bezel material: | Plastic       |

### MOUNTING

|                   |                |
|-------------------|----------------|
| Design:           | Flush          |
| Mounting cut-out: | 30 mm x 30 mm  |
| Mounting type:    | Panel mounting |

### OPERATING-/INDICATION PART

|                    |                 |
|--------------------|-----------------|
| Lens colour:       | Red             |
| Lens material:     | Plastic         |
| Lens illumination: | Non illuminated |
| Lens shape:        | Flush           |
| Lens optics:       | transparent     |

### ELECTRICAL CHARACTERISTICS

|            |   |
|------------|---|
| Standards: | The switches comply with the "Standards for low-voltage switching devices" DIN EN 60947-1 |
|------------|---|

### MECHANICAL CHARACTERISTIC

|                   |            |
|-------------------|------------|
| Switching action: | Maintained |
|-------------------|------------|

|                             |                            |
|-----------------------------|----------------------------|
| <b>Mechanical lifetime:</b> | 1 Mil. cycles of operation |
| <b>Operating force:</b>     | 6.2 N                      |
| <b>Operating Travel:</b>    | ca. 5.8 mm ± 0.2 mm        |
| <b>Weight:</b>              | 0.051 kg                   |

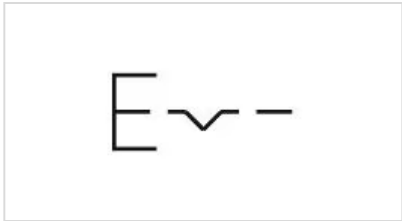
## AMBIENT CONDITION

|                               |                     |
|-------------------------------|---------------------|
| <b>IP Protection:</b>         | IP65 front side     |
| <b>Operating temperature:</b> | – 40 °C ... + 55 °C |
| <b>Storage temperature:</b>   | – 40 °C ... + 85 °C |

## CERTIFICATE

|               |                 |
|---------------|-----------------|
| <b>REACH:</b> | REACH compliant |
| <b>RoHS:</b>  | RoHS compliant  |

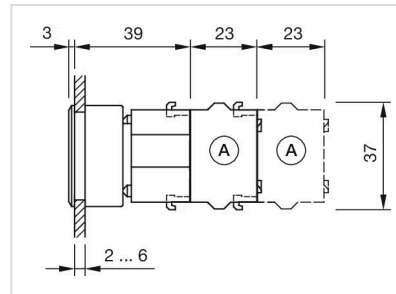
## OTHER

|   |   |
|---|---|
| <b>Short Description:</b>                 | Actuator, 30 mm x 30 mm, 35 mm x 35 mm, Flush, Non illuminated, Red, Plastic, transparent, Square, Black, Plastic, Maintained |
| <b>Housing colour:</b>                    | Black   |
| <b>Housing material:</b>                  | Plastic   |
| <b>Hints:</b>                             | Max. 3 switching elements can be clipped on   |
| <b>max. number of switching elements:</b> | 3   |
| <b>Wiring diagrams:</b>                   |    |
| <b>Mounting cut-outs:</b>                 |   |



A = Screw terminal  
 B = Push-in terminal (PIT)  
 C = Plug-in terminal 6.3 mm x 0.8 mm  
 D = Double plug-in terminal 6.3 mm x 0.8 mm

#### Dimension drawings:



A = Screw terminal