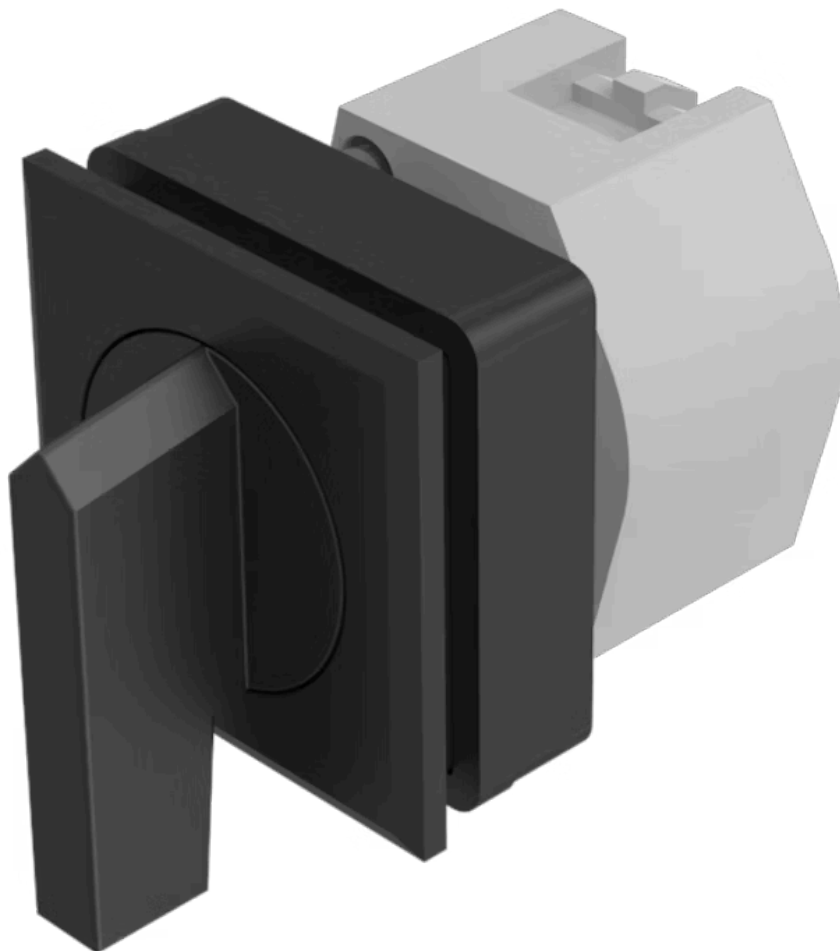


Actuator

704.294.000

Distribution by
Farnell



<https://farnell.eao.com/p/704.294.000>

Your product:



704.294.000 Actuator

FRONT

| | |
|-----------------------|---------------|
| Front dimension: | 35 mm x 35 mm |
| Front form: | Square |
| Front bezel colour: | Black |
| Front bezel material: | Plastic |

MOUNTING

| | |
|-------------------|----------------|
| Design: | Flush |
| Mounting cut-out: | 30 mm x 30 mm |
| Mounting type: | Panel mounting |

OPERATING-/INDICATION PART

| | |
|-------------------|---------|
| Lever colour: | Black |
| Lever bar colour: | Black |
| Lever material: | plastic |
| Lever shape: | long |

ELECTRICAL CHARACTERISTICS

| | |
|------------|---|
| Standards: | The switches comply with the "Standards for low-voltage switching devices" DIN EN 60947-1 |
|------------|---|

MECHANICAL CHARACTERISTICS

| | |
|----------------------|------------------------------|
| Switching action: | Momentary - Rest - Momentary |
| Switching positions: | 3 positions |

| | |
|-----------------------------|-------------------------------|
| Switching angle: | 42° left / 42° right |
| Mechanical lifetime: | ≤2.5 Mil. cycles of operation |
| Weight: | 0.056 kg |

AMBIENT CONDITION

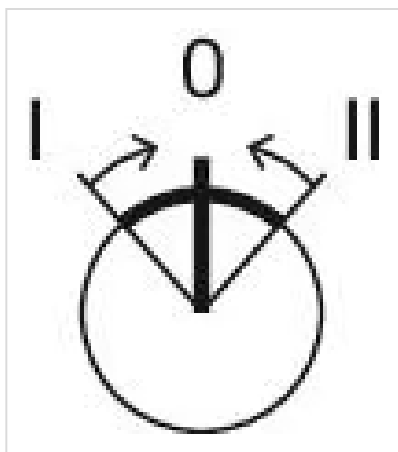
| | |
|-------------------------------|---------------------|
| IP Protection: | IP65 front side |
| Operating temperature: | – 40 °C ... + 55 °C |
| Storage temperature: | – 40 °C ... + 85 °C |

CERTIFICATE

| | |
|---------------|-----------------|
| REACH: | REACH compliant |
| RoHS: | RoHS compliant |

OTHER

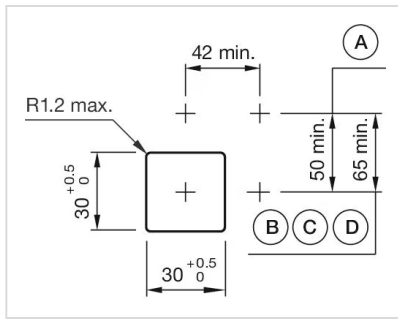
| | |
|---|---|
| Short Description: | Actuator, 30 mm x 30 mm, 35 mm x 35 mm, non illuminative, Black, long, Square, Black, Plastic, Momentary - Rest - Momentary |
| Hints: | Max. 3 switching elements can be clipped on |
| max. number of switching elements: | 3 |
| Switching positions: | |



Wiring diagrams:

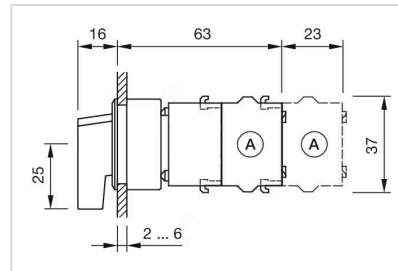


Mounting cut-outs:



A = Screw terminal
 B = Push-in terminal (PIT)
 C = Plug-in terminal 6.3 mm x 0.8 mm
 D = Double plug-in terminal 6.3v x 0.8 mm

Dimension drawings:



A = Screw terminal