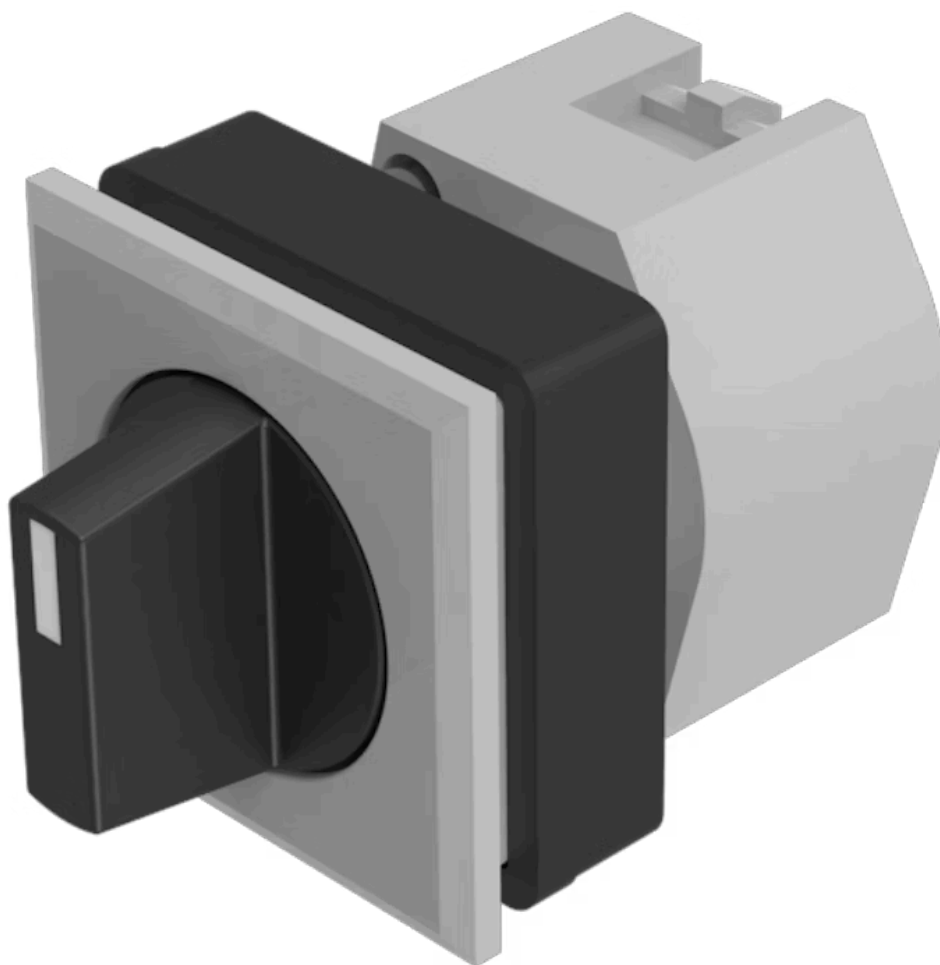


# Actuator

704.512.008

Distribution by  
Farnell



<https://farnell.eao.com/p/704.512.008>

Your product:

---



## 704.512.008 Actuator

### FRONT

|                       |               |
|-----------------------|---------------|
| Front dimension:      | 35 mm x 35 mm |
| Front form:           | Square        |
| Front bezel colour:   | Silver        |
| Front bezel material: | Plastic       |

### MOUNTING

|                   |                |
|-------------------|----------------|
| Design:           | Flush          |
| Mounting cut-out: | 30 mm x 30 mm  |
| Mounting type:    | Panel mounting |

### OPERATING-/INDICATION PART

|                   |         |
|-------------------|---------|
| Lever colour:     | Black   |
| Lever bar colour: | White   |
| Lever material:   | plastic |
| Lever shape:      | short   |

### ELECTRICAL CHARACTERISTICS

|            |   |
|------------|---|
| Standards: | The switches comply with the "Standards for low-voltage switching devices" DIN EN 60947-1 |
|------------|---|

### MECHANICAL CHARACTERISTIC

|                      |                  |
|----------------------|------------------|
| Switching action:    | Rest - Momentary |
| Switching positions: | 2 positions      |

**Switching angle:** 42° right

**Mechanical lifetime:** ≤2.5 Mil. cycles of operation

**Weight:** 0.056 kg

#### AMBIENT CONDITION

**IP Protection:** IP65 front side

**Operating temperature:** – 40 °C ... + 55 °C

**Storage temperature:** – 40 °C ... + 85 °C

#### CERTIFICATE

**REACH:** REACH compliant

**RoHS:** RoHS compliant

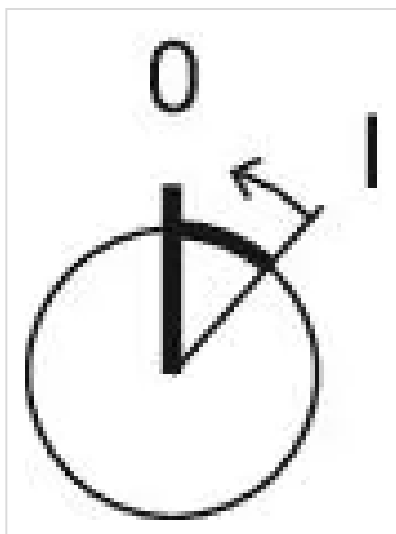
#### OTHER

**Short Description:** Actuator, 30 mm x 30 mm, 35 mm x 35 mm, non illuminative, Black, short, Square, Silver, Plastic, Rest - Momentary

**Hints:** Max. 3 switching elements can be clipped on

**max. number of switching elements:** 3

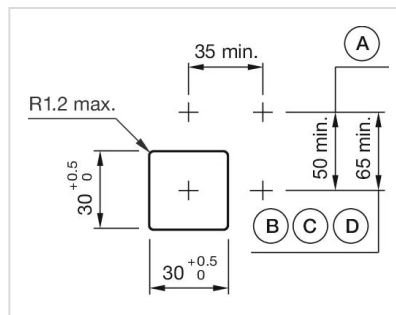
**Switching positions:**



**Wiring diagrams:**

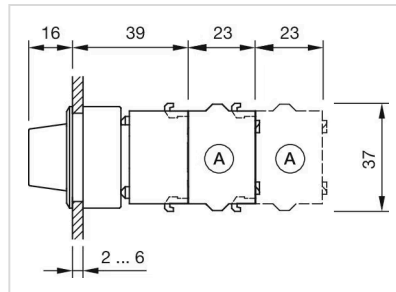


## Mounting cut-outs:



A = Screw terminal  
 B = Push-in terminal (PIT)  
 C = Plug-in terminal 6.3 mm x 0.8 mm  
 D = Double plug-in terminal 6.3 mm x 0.8 mm

## Dimension drawings:



A = Screw terminal