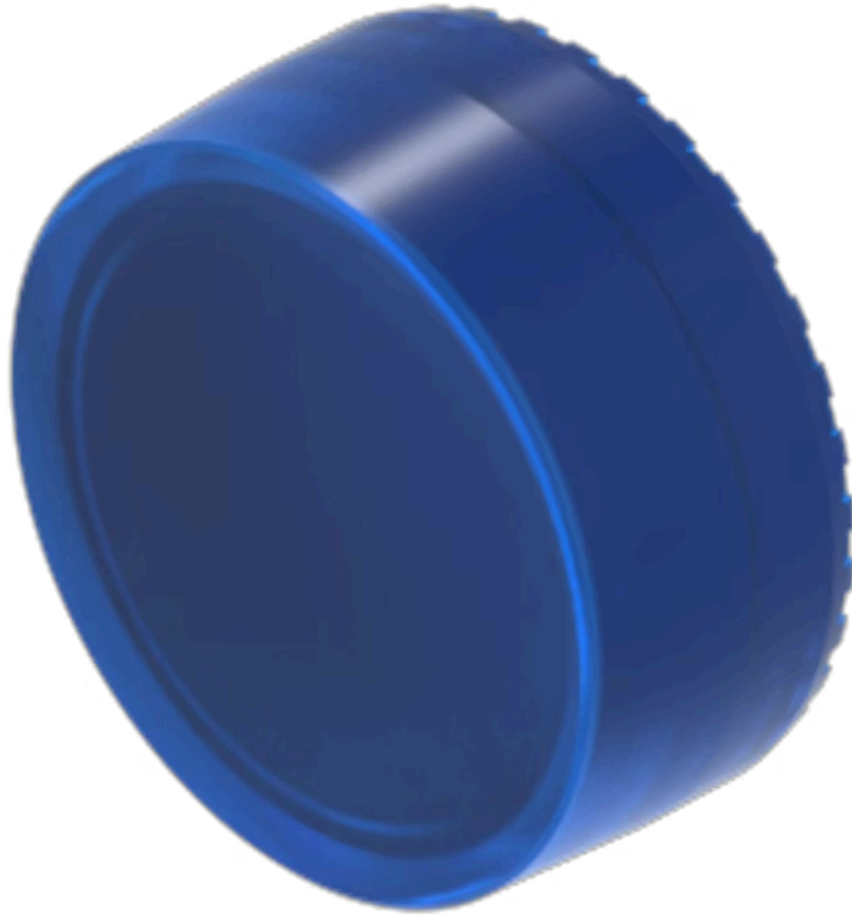


# Lens

704.611.6

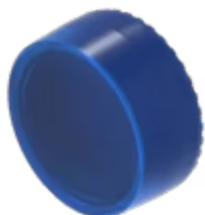
Distribution by  
Farnell



<https://farnell.eao.com/component/704.611.6/e...>

Your product:

---



## 704.611.6 Lens

### FRONT

**Front form:** Round

### OPERATING-/INDICATION PART

**Lens colour:** Blue

**Lens material:** Plastic

**Lens illumination:** Illuminated

**Lens shape:** Flush

**Lens optics:** transparent

**Lens type:** Raised above front bezel

**Marking plate illumination:** illuminative

**Shape of illumination:** Front

### MECHANICAL CHARACTERISTICS

**Weight:** 0.002 kg

### CERTIFICATE

**REACH:** REACH compliant

**RoHS:** RoHS compliant

### OTHER

**Short Description:** Lens, Ø 23.7 mm, Illuminated, Blue, Flush, Plastic

**Dimension:** Ø 23.7 mm

**Hints:**

To obtain IP67, use marking plate Part Nr. 704.610.X