

# Actuator

704.632.1

Distribution by  
Farnell



<https://farnell.eao.com/component/704.632.1/e...>

Your product:

---



## 704.632.1 Actuator

### FRONT

**Front form:** Round

### MOUNTING

**Mounting type:** Panel mounting

### OPERATING-/INDICATION PART

**Lens illumination:** Illuminated

### ELECTRICAL CHARACTERISTICS

**Standards:** The switches comply with the “Standards for low-voltage switching devices” DIN EN 60947-1

### MECHANICAL CHARACTERISTICS

**Switching action:** Maintained

**Mechanical lifetime:** ≤3 Mil. cycles of operation

**Operating force:** 8 N

**Operating Travel:** ca. 5.8 mm ± 0.2 mm

**Weight:** 0.009 kg

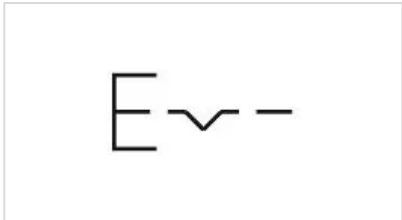
### AMBIENT CONDITION

<b>IP Protection:</b>	IP65 front side
<b>Operating temperature:</b>	– 40 °C ... + 55 °C
<b>Storage temperature:</b>	– 40 °C ... + 85 °C

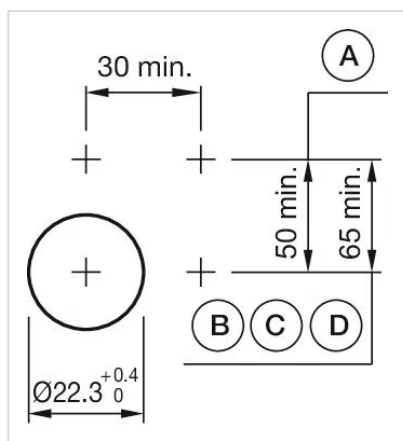
## CERTIFICATE

<b>REACH:</b>	REACH compliant
<b>RoHS:</b>	RoHS compliant

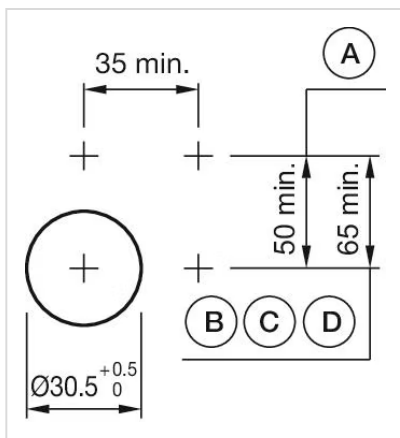
## OTHER

<b>Short Description:</b>	Actuator, Illuminated, Round, Maintained
<b>Housing colour:</b>	Grey
<b>Housing material:</b>	Plastic
<b>Hints:</b>	Max. 3 switching elements can be clipped on
<b>max. number of switching elements:</b>	3
<b>Wiring diagrams:</b>	

**Mounting cut-outs:**

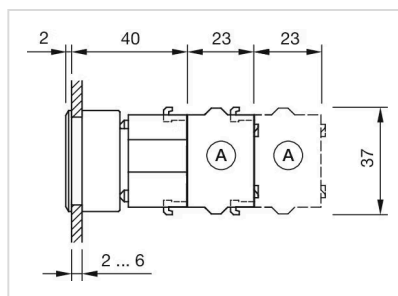


A = Screw terminal  
 B = Push-in terminal (PIT)  
 C = Plug-in terminal 6.3 mm x 0.8 mm  
 D = Double plug-in terminal 6.3 mm x 0.8 mm

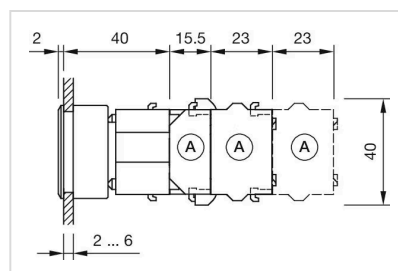


A = Screw terminal  
 B = Push-in terminal (PIT)  
 C = Plug-in terminal 6.3 mm x 0.8 mm  
 D = Double plug-in terminal 6.3 mm x 0.8 mm

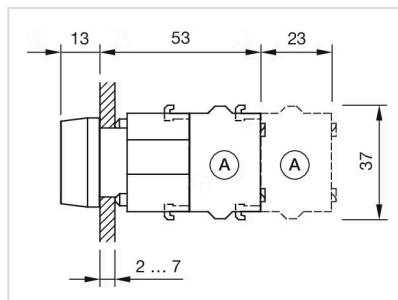
#### Dimension drawings:



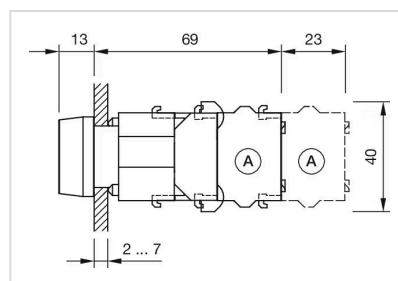
A = Screw terminal



A = Screw terminal



A = Screw terminal



A = Screw terminal