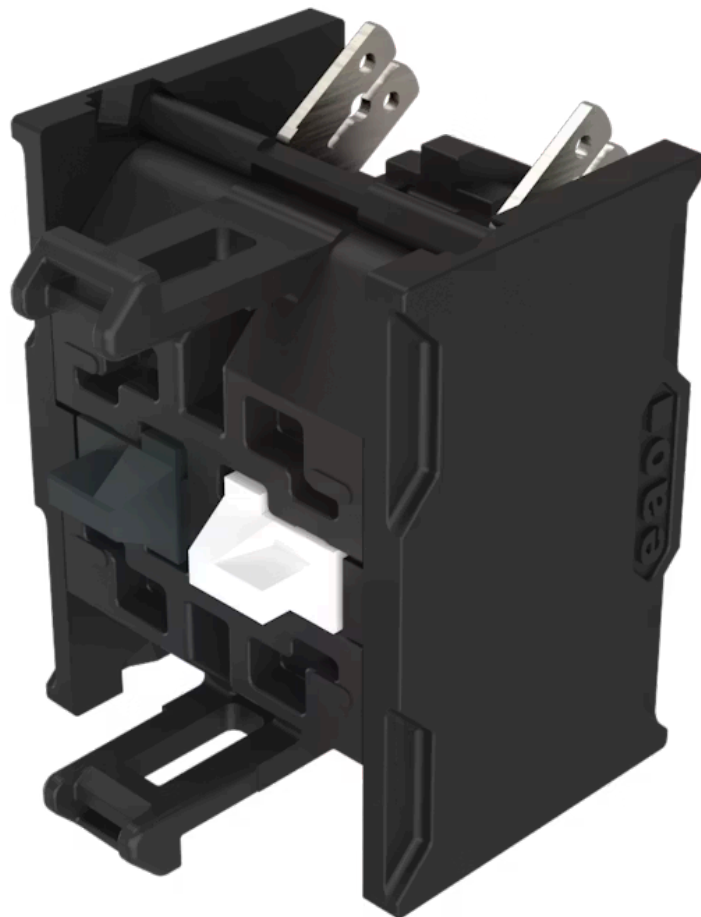


Switching element - New Version

704.915.4FS-1

Distribution by
Farnell



<https://farnell.eao.com/component/704.915.4FS...>

Your product:



704.915.4FS-1 Switching element - New Version

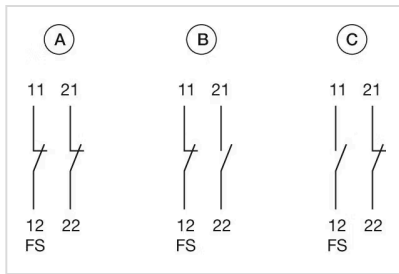
Loading ...

ELECTRICAL CHARACTERISTICS

Contacts:	1 NC / 1 FS		
Forward voltage:			
Rated impulse withstand voltage Uimp:	4 kV		
Rated insulation voltage Ui:	500 V		
Recommended minimum operational data:	Gold-silver contacts		
	Voltage	24 VDC	110 VDC
	Current	5 mA	2 mA
	Hard silver contacts		
	Voltage	24 VDC	110 VDC
	Current	50 mA	10 mA
Switching rating:	500 V AC @ 10 A		
Electrical lifetime:	50 000 cycles of operation (500 VAC, 10 A)		
Pollution degree:	3		
Standards:	The switches comply with the "Standards for low-voltage switching devices" DIN EN IEC UL 60947-5-1		
Thermal current Ith:	Max. current as per EN IEC 60947-5-1 10 A		

MECHANICAL CHARACTERISTICS

Terminal:	Plug-in terminal, 6.3 x 0.8 mm
Contact material:	Silver
Switching system:	Slow-make switching element
Switching system:	The double-break, slow-make switching element is equipped with one or two independent contact systems, acting as normally open or normally closed contact. The normally closed contact has forced opening. Slow-make contacts with forced action are ideal for high switch ratings.
Operating force:	1 Normally closed approx. 2 N, 1 Normally open approx. 3 N
Wire cross section:	Plug-in terminal 1 x 6.3 mm x 0.8 mm or 2 x 2.8 mm x 0.8 mm



A = mounted, not actuated
 B = mounted, actuated
 C = not mounted, not actuated

Dimension drawings:

