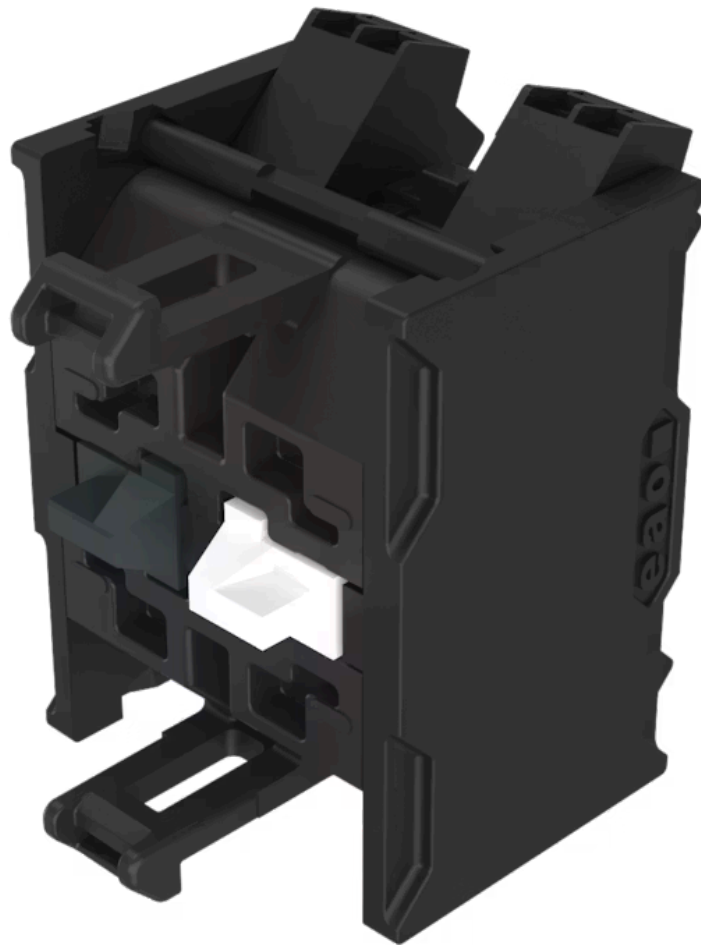


# Switching element - New Version

704.917.4FS-1

Distribution by  
Farnell



<https://farnell.eao.com/component/704.917.4FS...>

Your product:

---



## 704.917.4FS-1 Switching element - New Version

*Loading ...*

### **ELECTRICAL CHARACTERISTICS**

<b>Switching voltage and switching current:</b>	as per DIN EN IEC 60947-5-1		
	voltage	DC13	AC15
	24 V	4.0 A	8.0 A
	60 V	1.5 A	8.0 A
	110 V	1.0 A	
	120 V		8.0 A
	230 V	0.4 A	7.0 A
	400 V	0.2 A	5.0 A
	500 V	0.15 A	4.0 A
	as per UL 60947-5-1		
	voltage	power	
	24 VDC	4.0 A, Pilot duty	
	60 VDC	1.5 A, Pilot duty	
	120 VDC	1.0 A, Pilot duty	
	240 VDC	0.4 A, Pilot duty	
415 VDC	0.2 A, Pilot duty		
480 VDC	0.14A, Pilot duty		
120 VAC	8.0 A, Pilot duty		
240 VAC	7.0 A, Pilot duty		
415 VAC	5.0 A, Pilot duty		
480 VAC	4.0 A, Pilot duty		

**Contacts:** 1 NC / 1 FS

**Forward voltage:**

**Rated impulse withstand voltage Uimp:** 4 kV

**Rated insulation voltage Ui:** 500 V

**Recommended minimum operational data:**

Gold-silver contacts		
Voltage	24 VDC	
Current	5 mA	
Hard silver contacts		
Voltage	24 VDC	
Current	50 mA	

**Switching rating:** 500 V @ 10 A

**Electrical lifetime:** 50 000 cycles of operation (500 VAC, 10 A)

**Pollution degree:** 3

**Standards:** The switches comply with the "Standards for low-voltage switching devices" DIN EN IEC UL 60947-5-1

**Thermal current Ith:** Max. current as per EN IEC 60947-5-1 10 A

## MECHANICAL CHARACTERISTICS

**Terminal:** Push-in terminal

**Contact material:** Gold

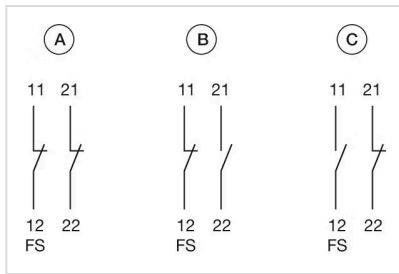
**Switching system:** Slow-make switching element

**Switching system:** The double-break, slow-make switching element is equipped with one or two independent contact systems, acting as normally open or normally closed contact. The normally closed contact has forced opening. Slow-make contacts with forced action are ideal for high switch ratings.

**Operating force:** 1 Normally closed approx. 2 N, 1 Normally open approx. 3 N

**Wire cross section:** Max. wire cross-section 2 wires with 1 mm





A = mounted, not actuated  
 B = mounted, actuated  
 C = not mounted, not actuated

**Dimension drawings:**

