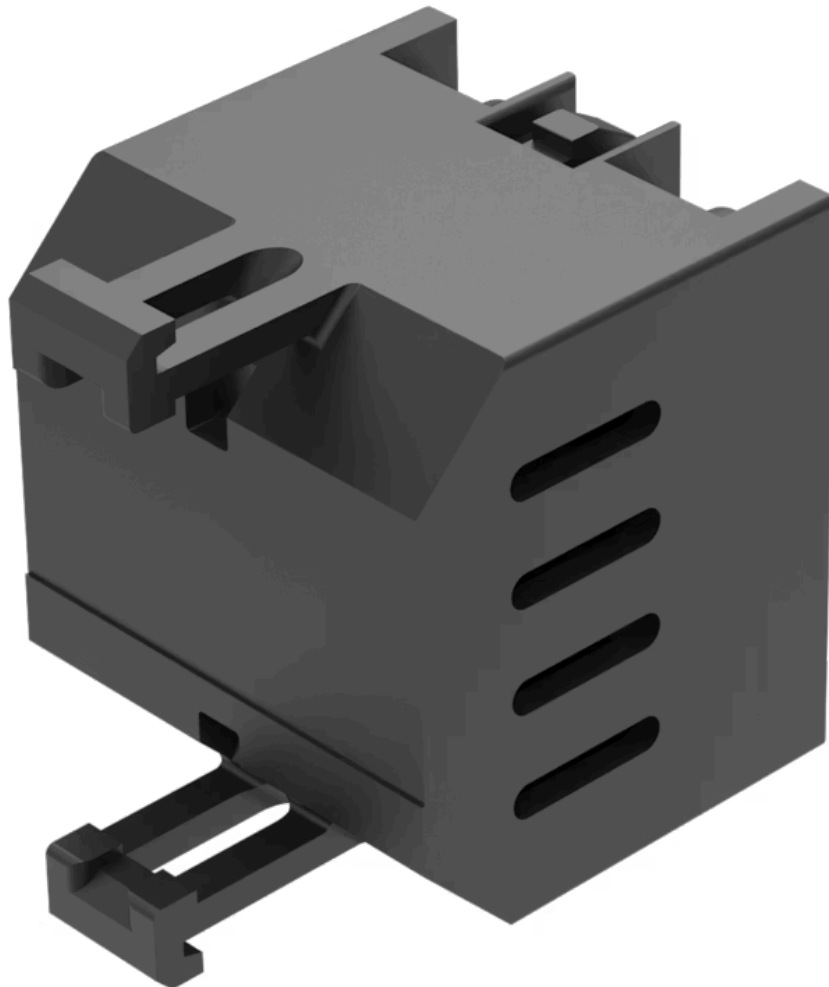


Resistor-diode element

704.941.9

Distribution by
Farnell



<https://farnell.eao.com/component/704.941.9/e...>

Your product:



704.941.9 Resistor-diode element

ELECTRICAL CHARACTERISTICS

Operating voltage: 130 - 230 V AC

MECHANICAL CHARACTERISTICS

Terminal: Screw terminal

Weight: 0.019 kg

OTHER

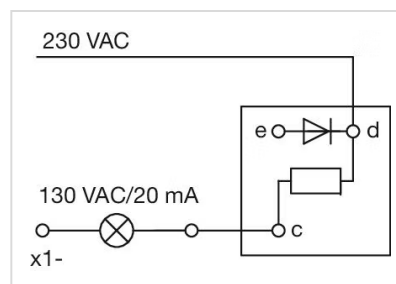
Short Description: Resistor-diode element, Plastic, Screw terminal, 130 - 230 V AC

Titel Accessory: Resistor-diode element

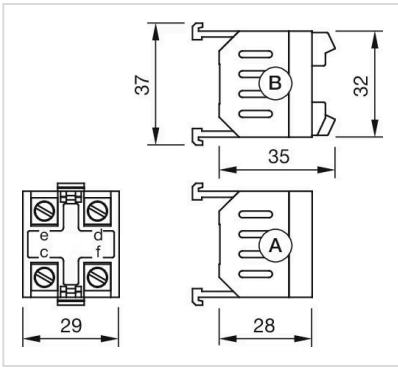
Material: Plastic

Product attributes: Lamp voltage/-current 130 V, 20 mA

Wiring diagrams:



Dimension drawings:



A = Screw terminal
Push-in terminal (PIT)