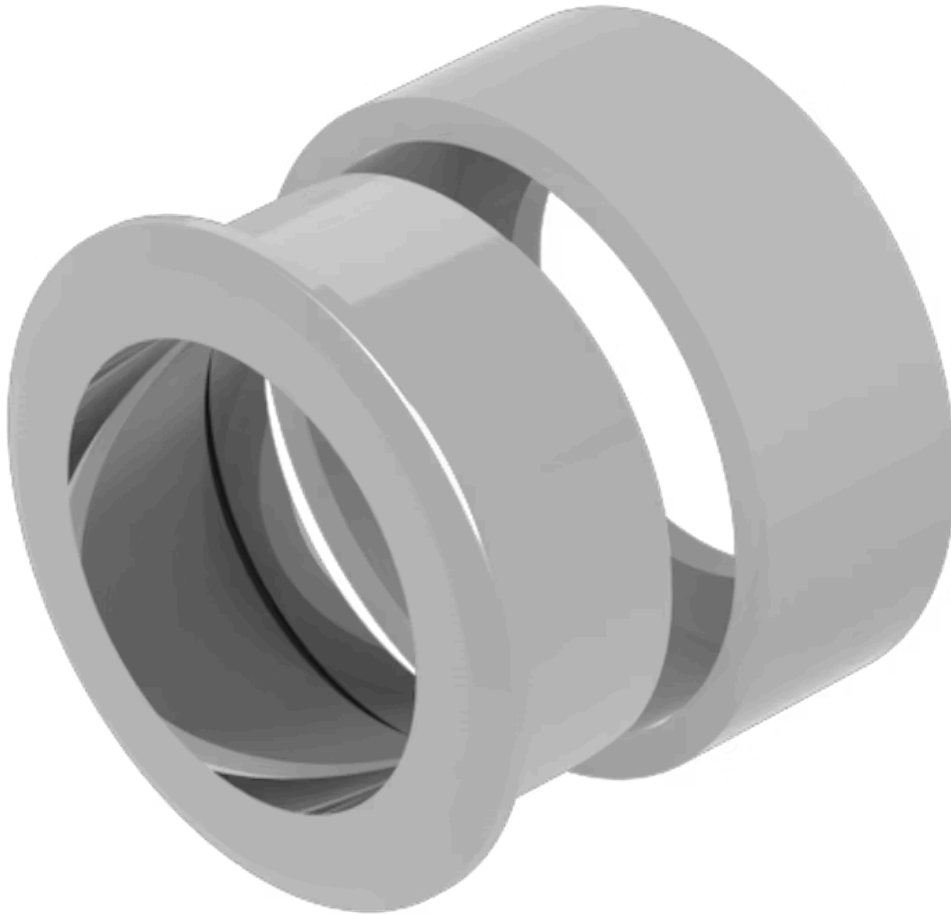


# Front bezel set

704.955.9

Distribution by  
Farnell



<https://farnell.eao.com/component/704.955.9/e...>

Your product:

---



## 704.955.9 Front bezel set

*Loading . . .*

### FRONT

<b>Front dimension:</b>	Ø 35 mm
<b>Front form:</b>	Round
<b>Front bezel colour:</b>	Nature
<b>Front bezel material:</b>	Stainless steel 304
<b>Front bezel type:</b>	Flush

### MOUNTING

<b>Mounting cut-out:</b>	Ø 30.5 mm
<b>Mounting type:</b>	Panel mounting

### MECHANICAL CHARACTERISTICS

<b>Weight:</b>	0.034 kg
----------------	----------

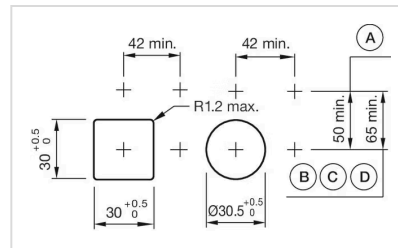
### CERTIFICATE

<b>REACH:</b>	REACH compliant
<b>RoHS:</b>	RoHS compliant

### OTHER

<b>Short Description:</b>	Front bezel set, Ø 35 mm, Nature, Stainless steel 304
<b>Dimension:</b>	Ø 35 mm
<b>Housing colour:</b>	Silver
<b>Housing material:</b>	Metal

## Mounting cut-outs:



- A = Screw terminal
- B = Push-in terminal (PIT)
- C = Plug-in terminal 6.3 mm x 0.8 mm
- D = Double plug-in terminal 6.3 mm x 0.8 mm