

Illuminated pushbutton Ø 22 mm stainless steel 304, with symbol

Distribution by  
Farnell



82-6151.2A34.B001



<https://farnell.eao.com/p/82-6151.2A34.B001>

Your product:

---



82-6151.2A34.B001  
Illuminated pushbutton Ø 22 mm  
stainless steel 304, with symbol

#### FRONT

|                              |                 |
|------------------------------|-----------------|
| <b>Front dimension:</b>      | Ø 25 mm         |
| <b>Front form:</b>           | Round           |
| <b>Front bezel material:</b> | Stainless steel |
| <b>Front bezel shape:</b>    | Flush           |

#### MOUNTING

|                          |                |
|--------------------------|----------------|
| <b>Mounting cut-out:</b> | Ø 22 mm        |
| <b>Mounting type:</b>    | Panel mounting |

#### OPERATING-/INDICATION PART

|                               |                   |
|-------------------------------|-------------------|
| <b>Lens colour:</b>           | Silver            |
| <b>Lens material:</b>         | Plastic metalised |
| <b>Lens illumination:</b>     | Illuminated       |
| <b>Lens shape:</b>            | Flush             |
| <b>Lens optics:</b>           | opaque            |
| <b>Symbol:</b>                | ON/OFF            |
| <b>Illumination colour:</b>   | Green             |
| <b>Shape of illumination:</b> | Symbol            |

#### ELECTRICAL CHARACTERISTICS

**Switching voltage and switching current:**

according to IEC 60947-5-1 (Silver contacts)

Service categorie AC-15

Voltage

24 VAC

35 VAC

110 VAC

220 VAC

Switch rating DC service categorie DC-13 (Silver contacts)

Voltage

24 VDC

35 VDC

110 VDC

220 VDC

Current

1 A

1 A (M12 version)

1 A

0.5 A

Current

0.7 A

0.5 A (M12 version)

0.2 A

0.1 A

according to UL 508 (Silver contacts)

$\cos\phi$  0,75 ... 0,8

Voltage

120 VAC

240 VAC

24 VAC

Current

5 A

3 A

1 A

|  |  |
|--|--|
| <b>Contacts:</b>                                   | 1 C  |
| <b>Operating voltage:</b>                          | 24 V DC  |
| <b>Operation current:</b>                          | 7 mA   |
| <b>Rated Operational Voltage <math>U_e</math>:</b> | 250 VAC  |
| <b>Rated insulation voltage <math>U_i</math>:</b>  | 250 V  |
| <b>Switching rating:</b>                           | 35 V @ 3 A   |
| <b>Electrical lifetime:</b>                        | 50 000 cycles of operation                                 |
| <b>Electric strength:</b>                          | 1500 VAC, 50 Hz 1 minute between life terminals and ground |
| <b>Pollution degree:</b>                           | 2, according to EN IEC 60947-1                             |
| <b>Thermal current <math>I_{th}</math>:</b>        | 5 A  |

## MECHANICAL CHARACTERISTIC

|                             |                                  |
|-----------------------------|----------------------------------|
| <b>Terminal:</b>            | Soldering terminal, 2.8 x 0.5 mm |
| <b>Contact material:</b>    | Silver                           |
| <b>Switching action:</b>    | Maintained                       |
| <b>Switching system:</b>    | Snap-action switching element    |
| <b>Mechanical lifetime:</b> | 500 000 cycles of operation      |
| <b>Operating force:</b>     | 4 N ... 7 N                      |
| <b>Operating Travel:</b>    | ca. 3 mm                         |
| <b>Tightening torque:</b>   | 0.5 ... 0.6 Nm                   |
| <b>Weight:</b>              | 0.025 kg                         |

## AMBIENT CONDITION

|                               |  |
|-------------------------------|--|
| <b>IP front protection:</b>   | IP65, IP67   |
| <b>Operating temperature:</b> | - 30 °C ... + 70 °C  |
| <b>Storage temperature:</b>   | - 40 °C ... + 80 °C  |
| <b>Shock resistance:</b>      | Max. 500 m / s <sup>2</sup> as per IEC 60068-2-27              |
| <b>Vibration resistance:</b>  | 10 ... 500 Hz, amplitude 1.5 mm p-p according to IEC 60068-2-6 |
| <b>Climate resistance:</b>    | Damp heat, 21 days according to IEC 60512-11                   |

## CERTIFICATE

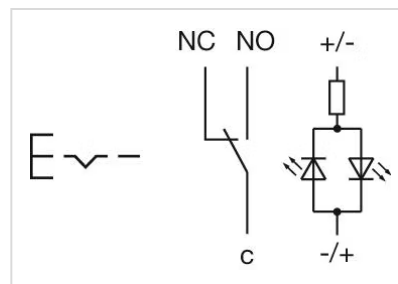
|                      |   |
|----------------------|---|
| <b>Approbations:</b> | CB, CCC, C UL, UL                               |
| <b>Conformities:</b> | CE, 2011 / 65 / EC (RoHS), 2014 / 35 / EU (LVD) |
| <b>REACH:</b>        | REACH compliant                                 |
| <b>RoHS:</b>         | RoHS compliant                                  |

## OTHER

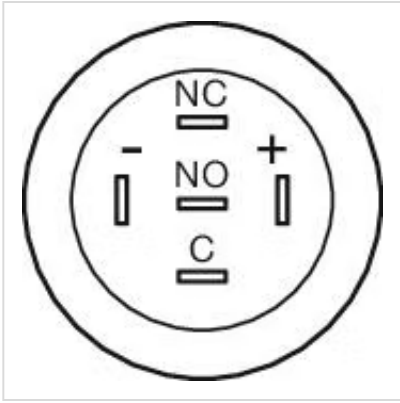
**Short Description:** Illuminated pushbutton Ø 22 mm stainless steel 304, with symbol, Maintained, 35 V @ 3 A, 24 V DC, 1 C, Soldering terminal, 2.8 x 0.5 mm, Round, Stainless steel, Green, ON/OFF, Silver

**Kind of illumination:** Single-LED

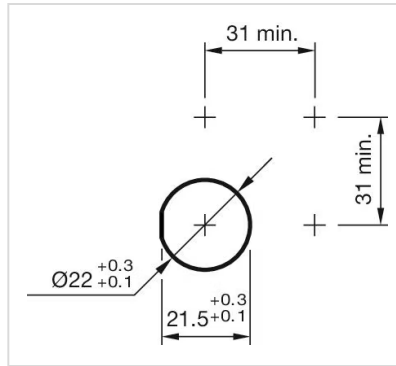
**Wiring diagrams:**



**Component layouts:**



**Mounting cut-outs:**



**Dimension drawings:**

