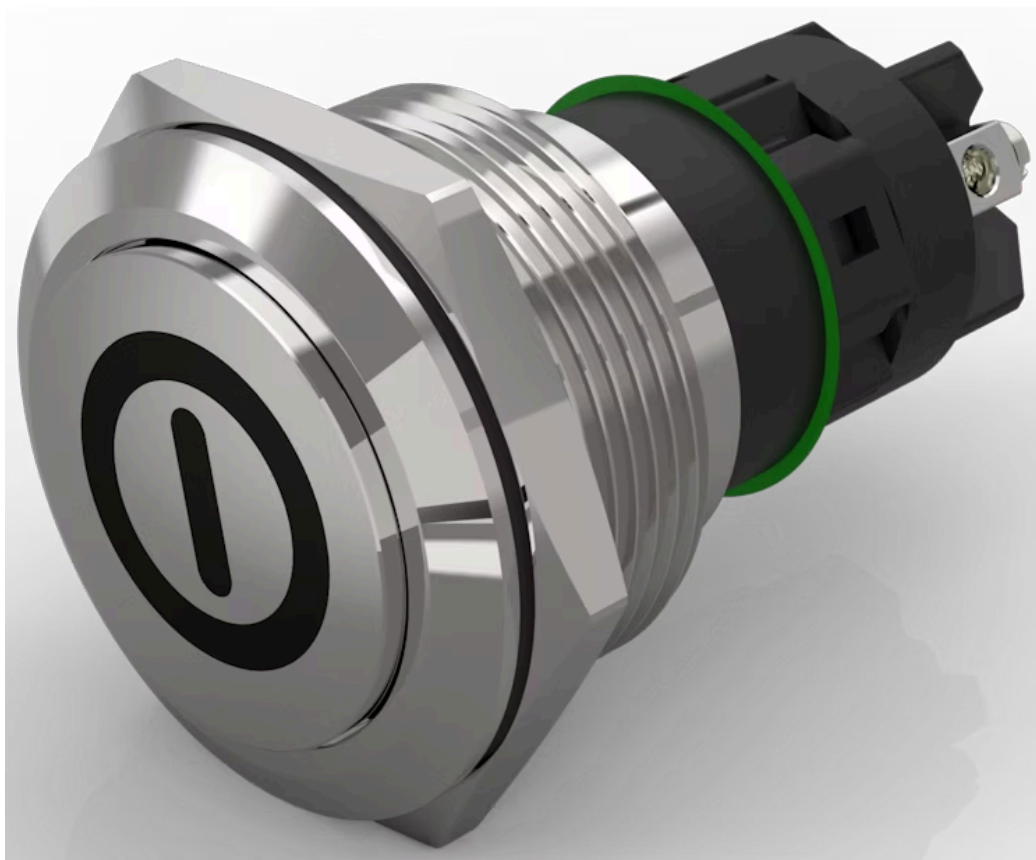


# Pushbutton Ø 22 mm silver contact

82-6162.1000.B001

Distribution by  
Farnell



<https://farnell.eao.com/p/82-6162.1000.B001>

Your product:

---



## 82-6162.1000.B001

### Pushbutton Ø 22 mm silver contact

#### FRONT

Front dimension:	Ø 25 mm
Front form:	Round
Front bezel material:	Stainless steel
Front bezel shape:	Flush

#### MOUNTING

Mounting cut-out:	Ø 22 mm
Mounting type:	Panel mounting

#### OPERATING-/INDICATION PART

Lens colour:	Silver
Lens material:	Stainless steel
Lens illumination:	Non illuminated
Lens shape:	Flush
Lens optics:	opaque
Symbol:	ON/OFF

#### ELECTRICAL CHARACTERISTICS

Switching voltage and switching current:

according to IEC 60947-5-1 (Silver contacts)	
Service categorie AC-15	
Voltage	Current
24 VAC	1 A
35 VAC	1 A (M12 version)
110 VAC	1 A
220 VAC	0.5 A
Switch rating DC service categorie DC-13 (Silver contacts)	
Voltage	Current
24 VDC	0.7 A
35 VDC	0.5 A (M12 version)
110 VDC	0.2 A
220 VDC	0.1 A

according to UL 508 (Silver contacts)	
cosφ 0,75 ... 0,8	
Voltage	Current
120 VAC	5 A
240 VAC	3 A
24 VAC	1 A

<b>Contacts:</b>	1 C
<b>Rated Operational Voltage Ue:</b>	250 VAC
<b>Rated insulation voltage Ui:</b>	250 V
<b>Switching rating:</b>	240 V
<b>Electrical lifetime:</b>	50 000 cycles of operation
<b>Electric strength:</b>	1500 VAC, 50 Hz 1 minute between life terminals and ground
<b>Pollution degree:</b>	2, according to EN IEC 60947-1
<b>Thermal current Ith:</b>	5 A

## MECHANICAL CHARACTERISTICS

<b>Terminal:</b>	Screw terminal
<b>Contact material:</b>	Silver
<b>Switching action:</b>	Momentary
<b>Switching system:</b>	Snap-action switching element
<b>Mechanical lifetime:</b>	1 Mil. cycles of operation
<b>Operating force:</b>	4 N ... 7 N
<b>Operating Travel:</b>	ca. 3 mm
<b>Tightening torque:</b>	0.5 ... 0.6 Nm, Screw terminal 0.1 Nm
<b>Weight:</b>	0.02 kg

## AMBIENT CONDITION

<b>IP front protection:</b>	
-----------------------------	--

IP65, IP67

**Operating temperature:** – 30 °C ... + 70 °C

**Storage temperature:** – 40 °C ... + 80 °C

**Shock resistance:** Max. 500 m / s<sup>2</sup> as per IEC 60068-2-27

**Vibration resistance:** 10 ... 500 Hz, amplitude 1.5 mm p-p according to IEC 60068-2-6

**Climate resistance:** Damp heat, 21 days according to IEC 60512-11

## CERTIFICATE

**Approbations:** CB, CCC, C UL, UL

**Conformities:** CE, 2011 / 65 / EC (RoHS), 2014 / 35 / EU (LVD)

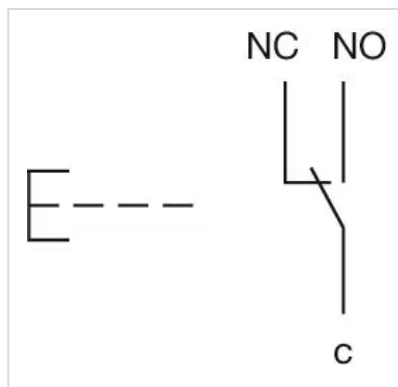
**REACH:** REACH compliant

**RoHS:** RoHS compliant

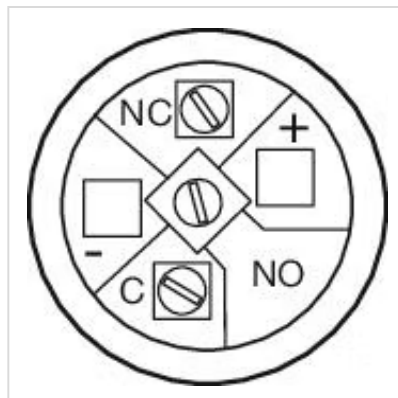
## OTHER

**Short Description:** Pushbutton Ø 22 mm silver contact, Momentary, 240 V, 1 C, Screw terminal, Round, Stainless steel, ON/OFF, Silver

**Wiring diagrams:**



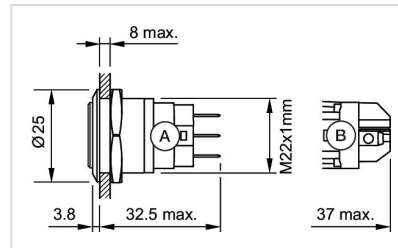
**Component layouts:**



### Mounting cut-outs:



### Dimension drawings:



A = Solder terminal  
B = Screw terminal