

Illuminated push button, connector M12, $\varnothing 22$ mm, stainless steel 316L

Distribution by
Farnell



82-6657.2114



<https://farnell.eao.com/component/82-6657.211...>

Your product:



82-6657.2114

Illuminated push button, connector M12,
Ø 22 mm, stainless steel 316L

Loading . . .

FRONT

Front dimension:	Ø 25 mm
Front form:	Round
Front bezel material:	Stainless steel 316L
Front bezel shape:	Flush

MOUNTING

Mounting cut-out:	Ø 22 mm
Mounting type:	Panel mounting

OPERATING-/INDICATION PART

Lens colour:	Silver
Lens material:	Stainless steel 316L
Lens illumination:	Illuminated
Lens shape:	Flush
Lens optics:	opaque
Illumination colour:	Red
Shape of illumination:	Ring (Tritan)

ELECTRICAL CHARACTERISTICS

Switching voltage and switching current:	according to UL 508 (Silver contacts) cosφ 0,75 ... 0,8	
	Voltage	Current
	120 VAC	5 A
	240 VAC	3 A
	24 VAC	1 A

according to IEC 60947-5-1 (Silver contacts)

Service categorie AC-15

Voltage

24 VAC

35 VAC

110 VAC

220 VAC

Switch rating DC service categorie DC-13 (Silver contacts)

Voltage

24 VDC

35 VDC

110 VDC

220 VDC

Current

1 A

1 A (M12 version)

1 A

0.5 A

Current

0.7 A

0.5 A (M12 version)

0.2 A

0.1 A

Operating voltage:	24 V DC (LED)
Rated Operational Voltage Ue:	250 VAC
Rated insulation voltage Ui:	250 V
Short circuit protective device:	fuse / 500 V / 5 A / gG
Rated short-circuit current caused:	AC: 1 kA DC: 1 kA
Switching rating:	35 V AC/DC @ 0,6 A
Electrical lifetime:	50 000 cycles of operation
Electric strength:	1500 VAC, 50 Hz 1 minute between life terminals and ground
Pollution degree:	2, according to EN IEC 60947-1
Thermal current Ith:	5 A

MECHANICAL CHARACTERISTICS

Terminal:	Connector M12 (5 pins)
Switching action:	Maintained
Switching system:	Snap-action switching element
Mechanical lifetime:	500 000 cycles of operation
Operating force:	4 N ... 7 N
Operating Travel:	ca. 3 mm
Tightening torque:	0.5 ... 0.6 Nm
Weight:	0.043 kg

AMBIENT CONDITION

IP front protection:	IP65, IP67
Operating temperature:	- 30 °C ... + 70 °C
Storage temperature:	- 40 °C ... + 80 °C

Shock resistance: Max. 500 m / s² as per IEC 60068-2-27

Vibration resistance: 10 ... 500 Hz, amplitude 1.5 mm p-p according to IEC 60068-2-6

Climate resistance: Damp heat, 21 days according to IEC 60512-11

CERTIFICATE

Conformities: CE, 2011 / 65 / EC (RoHS), 2014 / 35 / EU (LVD)

REACH: REACH compliant

RoHS: RoHS compliant

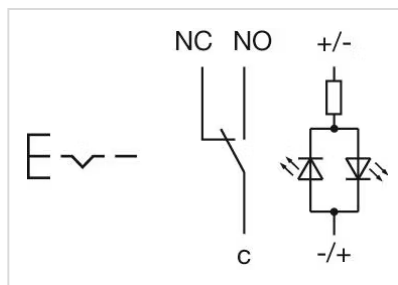
OTHER

Short Description: Illuminated push button, connector M12, Ø 22 mm, stainless steel 316L, Maintained, 35 V AC/DC @ 0,6 A, 24 V DC (LED), Connector M12 (5 pins), Round, Stainless steel 316L, Red, Silver

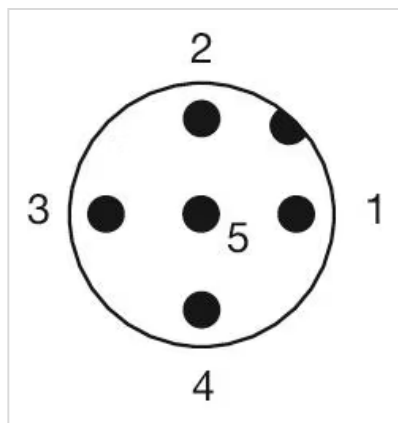
Kind of illumination: Single-LED

Housing size: 19 mm

Wiring diagrams:

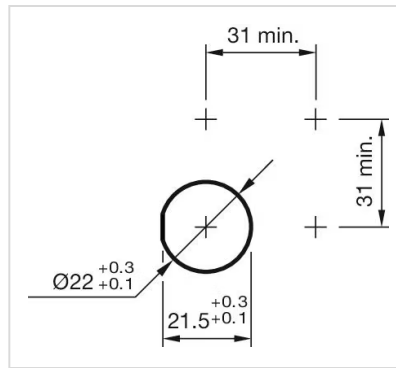


Component layouts:



1 = NC
 2 = LED+
 3 = Common
 4 = LED-
 5 = NO
 A-Coded

Mounting cut-outs:



Dimension drawings:

