

Illuminated push button, connector M12,  $\varnothing 22$  mm, stainless steel 316L, cable 200 mm, 180°

Distribution by  
farnell



82-665A.2124



<https://farnell.eao.com/component/82-665A.212...>

Your product:

---



82-665A.2124

Illuminated push button, connector M12,  
Ø 22 mm, stainless steel 316L, cable  
200 mm, 180°

#### FRONT

<b>Front dimension:</b>	Ø 25 mm
<b>Front form:</b>	Round
<b>Front bezel material:</b>	Stainless steel 316L
<b>Front bezel shape:</b>	Flush

#### MOUNTING

<b>Mounting cut-out:</b>	Ø 22 mm
<b>Mounting type:</b>	Panel mounting

#### OPERATING-/INDICATION PART

<b>Lens colour:</b>	Silver
<b>Lens material:</b>	Stainless steel 316L
<b>Lens illumination:</b>	Illuminated
<b>Lens shape:</b>	Flush
<b>Lens optics:</b>	opaque
<b>Illumination colour:</b>	Blue
<b>Shape of illumination:</b>	Ring (Tritan)

#### ELECTRICAL CHARACTERISTICS

<b>Switching voltage and switching current:</b>	according to UL 508 (Silver contacts) cos $\phi$ 0,75 ... 0,8	
	Voltage	Current
	120 VAC	5 A
	240 VAC	3 A
	24 VAC	1 A

according to IEC 60947-5-1 (Silver contacts)

Service categorie AC-15

Voltage

24 VAC

35 VAC

110 VAC

220 VAC

Switch rating DC service categorie DC-13 (Silver contacts)

Voltage

24 VDC

35 VDC

110 VDC

220 VDC

Current

1 A

1 A (M12 version)

1 A

0.5 A

Current

0.7 A

0.5 A (M12 version)

0.2 A

0.1 A

<b>Operating voltage:</b>	24 V DC (LED)
<b>Rated Operational Voltage Ue:</b>	250 VAC
<b>Rated insulation voltage Ui:</b>	250 V
<b>Switching rating:</b>	35 V AC/DC @ 0,6 A
<b>Electrical lifetime:</b>	50 000 cycles of operation
<b>Electric strength:</b>	1500 VAC, 50 Hz 1 minute between life terminals and ground
<b>Pollution degree:</b>	2, according to EN IEC 60947-1
<b>Thermal current Ith:</b>	5 A

## MECHANICAL CHARACTERISTICS

<b>Terminal:</b>	Cable 200 mm, 180°, Connector M12
<b>Switching action:</b>	Maintained
<b>Switching system:</b>	Snap-action switching element
<b>Mechanical lifetime:</b>	500 000 cycles of operation
<b>Operating force:</b>	4 N ... 7 N
<b>Operating Travel:</b>	ca. 3 mm
<b>Tightening torque:</b>	0.5 ... 0.6 Nm
<b>Weight:</b>	0.062 kg

## AMBIENT CONDITION

<b>IP front protection:</b>	IP65, IP67
<b>Operating temperature:</b>	- 30 °C ... + 70 °C
<b>Storage temperature:</b>	- 40 °C ... + 80 °C
<b>Shock resistance:</b>	Max. 500 m / s <sup>2</sup> as per IEC 60068-2-27
<b>Vibration resistance:</b>	10 ... 500 Hz, amplitude 1.5 mm p-p according to IEC 60068-2-6

**Climate resistance:** Damp heat, 21 days according to IEC 60512-11

**CERTIFICATE**

**Conformities:** CE, 2011 / 65 / EC (RoHS), 2014 / 35 / EU (LVD)

**REACH:** REACH compliant

**RoHS:** RoHS compliant

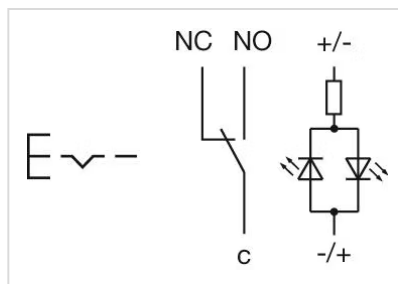
**OTHER**

**Short Description:** Illuminated push button, connector M12, Ø 22 mm, stainless steel 316L, cable 200 mm, 180°, Maintained, 35 V AC/DC @ 0,6 A, 24 V DC (LED), Cable 200 mm, 180°, Connector M12, Round, Stainless steel 316L, Blue, Silver

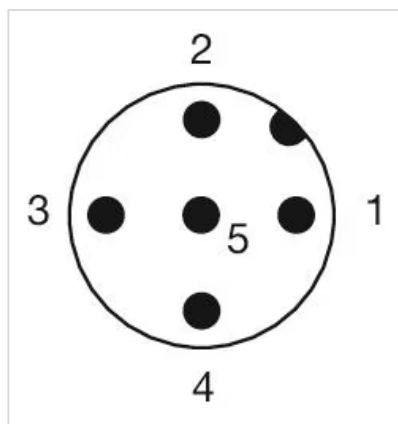
**Kind of illumination:** Single-LED

**Housing size:** 19 mm

**Wiring diagrams:**

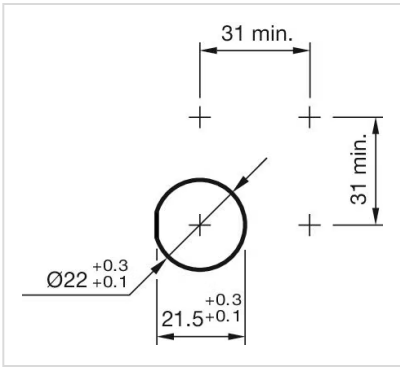


**Component layouts:**



- 1 = NC
  - 2 = LED+
  - 3 = Common
  - 4 = LED-
  - 5 = NO
- A-Coded

**Mounting cut-outs:**



**Dimension drawings:**

