

Illuminated push button, connector M12, $\varnothing 22$ mm, stainless steel 316L, cable 200 mm, 180°

Distribution by
farnell



82-665A.2154



<https://farnell.eao.com/component/82-665A.215...>

Your product:



82-665A.2154

Illuminated push button, connector M12,
Ø 22 mm, stainless steel 316L, cable
200 mm, 180°

Loading ...

FRONT

Front dimension:	Ø 25 mm
Front form:	Round
Front bezel material:	Stainless steel 316L
Front bezel shape:	Flush

MOUNTING

Mounting cut-out:	Ø 22 mm
Mounting type:	Panel mounting

OPERATING-/INDICATION PART

Lens colour:	Silver
Lens material:	Stainless steel 316L
Lens illumination:	Illuminated
Lens shape:	Flush
Lens optics:	opaque
Illumination colour:	White
Shape of illumination:	Ring (Tritan)

ELECTRICAL CHARACTERISTICS

Switching voltage and switching current:

according to UL 508 (Silver contacts)

$\cos\phi$ 0,75 ... 0,8

Voltage	Current
120 VAC	5 A
240 VAC	3 A
24 VAC	1 A

according to IEC 60947-5-1 (Silver contacts)

Service categorie AC-15

Voltage	Current
24 VAC	1 A
35 VAC	1 A (M12 version)
110 VAC	1 A
220 VAC	0.5 A

Switch rating DC service categorie DC-13 (Silver contacts)

Voltage	Current
24 VDC	0.7 A
35 VDC	0.5 A (M12 version)
110 VDC	0.2 A
220 VDC	0.1 A

Operating voltage:	24 V DC (LED)
Rated Operational Voltage U_e:	250 VAC
Rated insulation voltage U_i:	250 V
Short circuit protective device:	fuse / 500 V / 5 A / gG
Rated short-circuit current caused:	AC: 1 kA DC: 1 kA
Switching rating:	35 V AC/DC @ 0,6 A
Electrical lifetime:	50 000 cycles of operation
Electric strength:	1500 VAC, 50 Hz 1 minute between life terminals and ground
Pollution degree:	2, according to EN IEC 60947-1
Thermal current I_{th}:	5 A

MECHANICAL CHARACTERISTICS

Terminal:	Cable 200 mm, 180°, Connector M12
Switching action:	Maintained
Switching system:	Snap-action switching element
Mechanical lifetime:	500 000 cycles of operation
Operating force:	4 N ... 7 N
Operating Travel:	ca. 3 mm
Tightening torque:	0.5 ... 0.6 Nm
Weight:	0.062 kg

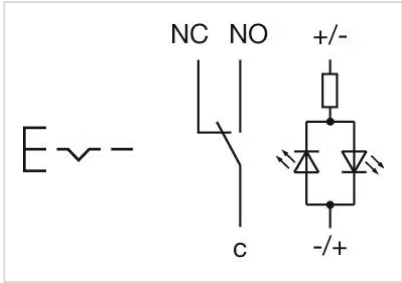
AMBIENT CONDITION

IP front protection:	IP65, IP67
Operating temperature:	- 30 °C ... + 70 °C
Storage temperature:	- 40 °C ... + 80 °C
Shock resistance:	Max. 500 m / s ² as per IEC 60068-2-27
Vibration resistance:	10 ... 500 Hz, amplitude 1.5 mm p-p according to IEC 60068-2-6
Climate resistance:	Damp heat, 21 days according to IEC 60512-11

CERTIFICATE

Conformities:	CE, 2011 / 65 / EC (RoHS), 2014 / 35 / EU (LVD)
REACH:	REACH compliant
RoHS:	RoHS compliant

OTHER

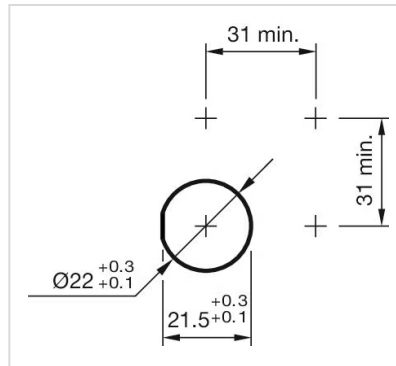
Short Description:	Illuminated push button, connector M12, Ø 22 mm, stainless steel 316L, cable 200 mm, 180°, Maintained, 35 V AC/DC @ 0,6 A, 24 V DC (LED), Cable 200 mm, 180°, Connector M12, Round, Stainless steel 316L, White, Silver
Kind of illumination:	Single-LED
Housing size:	19 mm
Wiring diagrams:	

Component layouts:



- 1 = NC
- 2 = LED+
- 3 = Common
- 4 = LED-
- 5 = NO
- A-Coded

Mounting cut-outs:



Dimension drawings:

